

Recombinant Mycobacterium Tuberculosis CYP125 Protein (1-433 aa), His-SUMO-tagged

Cat. No. CYP125-932M Lot. No. (See product label)

SPECIFICATION

Product Overview	Recombinant Mycobacterium Tuberculosis (strain ATCC 25618/H37Rv) CYP125 Protein (1-433 aa) is produced by E. coli expression system. This protein is fused with a 6xHis-SUMO tag at the N-terminal. Protein Description: Full Length.
Species	Mycobacterium Tuberculosis
Source	E.coli
ProteinLength	1-433 aa
Description	Catalyzes the C-27 hydroxylation of cholest-4-en-3-one and cholesterol and subsequently oxidizes the alcohol of the former to the cholest-4-en-3-one-27-oic acid via the aldehyde intermediate. Not required to incorporate the cholesterol side-chain carbon atoms into cellular lipids.
Form	Tris-based buffer, 50% glycerol
Molecular Mass	64.4 kDa
AA Sequence	MSWNHQSVEIAVRRRTTVSPNLPPGFDFDTPAIYAERLPVAEFAELRSAAPIWWNG QDPGKGGGFHDGGFWAITKLNDVKEISRHSDFVSSYENGVIPRFKNDIAREDIEVQR FVMLNMDAPHHTRLRKIISRGFTPRAVGRHLHDELQERAQKIAAEAAAAGSGDFVEQV SCELPLQAIAGLLGVPQEDRGKLFHWSNEMTGNEDEPEYAHIDPKASSAELIGYAMK MAEEKAKNPADDIVTQLIQADIDGEKLSDDFFGVVMLAVAGNETTRNSITQGMMMA

 Tel: 1-631-559-9269 1-516-512-3133

 Email: info@creative-biomart.com  Fax: 1-631-938-8127

 45-1 Ramsey Road, Shirley, NY 11967, USA

FAEHPDQWELYKKVRPETADEIVRWATPVTAFAQRTALRDYELSGVQIKKGQRVVM
FYRSANFDEEVFQDPFTFNILRNPNPHVGFGGTGAHYCIGANLARMTINLIFNAVADH
MPDLKPISAPERLRSGWLNIGIKHWQVDYTGRCVVAH

Purity > 90% as determined by SDS-PAGE.

Notes Repeated freezing and thawing is not recommended. Store working aliquots at 4 centigrade for up to one week.

Storage The shelf life is related to many factors, storage state, buffer ingredients, storage temperature and the stability of the protein itself. Generally, the shelf life of liquid form is 6 months at -20 centigrade/-80 centigrade. The shelf life of lyophilized form is 12 months at -20 centigrade/-80 centigrade.

Concentration A hardcopy of COA with concentration instruction is sent along with the products.

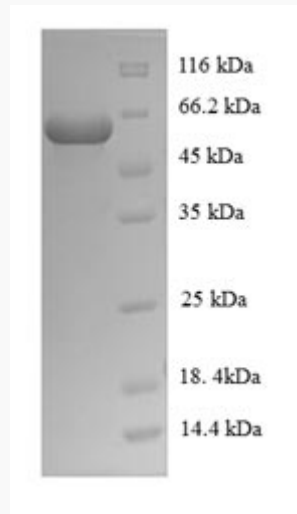
GENE INFORMATION

UniProt ID [P9WPP1](#)

 Tel: 1-631-559-9269 1-516-512-3133

 Email: info@creative-biomart.com  Fax: 1-631-938-8127

 45-1 Ramsey Road, Shirley, NY 11967, USA



(Tris-Glycine gel) Discontinuous SDS-PAGE (reduced) with 5% enrichment gel and 15% separation gel.

 Tel: 1-631-559-9269 1-516-512-3133

 Email: info@creative-biomart.com  Fax: 1-631-938-8127

 45-1 Ramsey Road, Shirley, NY 11967, USA