

Recombinant Full Length Human CYP17A1 Protein, C-Flag-tagged

Cat. No. CYP17A1-795HFL **Lot. No.** (See product label)

SPECIFICATION

Product Overview	Recombinant Full Length Human CYP17A1 Protein, fused to Flag-tag at C-terminus, was expressed in Mammalian cells.
Species	Human
Source	Mammalian Cells
Description	This gene encodes a member of the cytochrome P450 superfamily of enzymes. The cytochrome P450 proteins are monooxygenases which catalyze many reactions involved in drug metabolism and synthesis of cholesterol, steroids and other lipids. This protein localizes to the endoplasmic reticulum. It has both 17 α -hydroxylase and 17,20-lyase activities and is a key enzyme in the steroidogenic pathway that produces progestins, mineralocorticoids, glucocorticoids, androgens, and estrogens. Mutations in this gene are associated with isolated steroid-17 α -hydroxylase deficiency, 17- α -hydroxylase/17,20-lyase deficiency, pseudohermaphroditism, and adrenal hyperplasia.
Form	25 mM Tris HCl, pH 7.3, 100 mM glycine, 10% glycerol.
Molecular Mass	57.2 kDa
AA Sequence	MWELVALLLLTLAYLFWPKRRCPGAKYPKSLLSLPLVGSLPFLPRHGHMHNNFFKLQ KKYGPIYSVRMGT KTTVIVGHHQLAKEVLIKKGKDFSGRPQMATLDIASNNRKGIAF ADSGAHWQLHRRRLAMATFALFKDGDQ KLEKIICQEISTLCDMLATHNGQSIDISFPV

 Tel: 1-631-559-9269 1-516-512-3133

 Email: info@creative-biomart.com  Fax: 1-631-938-8127

 45-1 Ramsey Road, Shirley, NY 11967, USA

FVAVTNVISLICFNTSYKNGDPELNVIQNYNEGIIDNLS KDSLVDLVPWLKIFPNKTLE
 KLKSHVKIRNDLLNKILENYKEKFRSDSITNMLDTLMQAKMNSDNGNAGP DQDSELL
 SDNHILTTIGDIFGAGVETTTSVVKWTLAFLHNPQVKKKLYEEIDQNVGFSRTPTISD
 RNRL LLEATIREVLRLRPVAPMLIPHKANVDSSIGFAVDKGTVEIINLWALHHNEKE
 WHQPDQFMPERFLNP AGTQLISPSVSYLPFGAGPRSCIGEILARQELFLIMAWLLQR
 FDLEVPDDGQLPSLEGIPKVVFLIDSK
 VKIKVRQAWREAQAEGSTTRTRPLEQKLISEEDLAANDILDYKDDDDKV

Purity > 80% as determined by SDS-PAGE and Coomassie blue staining.

Stability Stable for 12 months from the date of receipt of the product under proper storage and handling conditions. Avoid repeated freeze-thaw cycles.

Storage Store at -80 centigrade.

Concentration >50 ug/mL as determined by microplate BCA method.

Preparation Recombinant protein was captured through anti-DDK affinity column followed by conventional chromatography steps.

Protein Families Druggable Genome, P450

Protein Pathways C21-Steroid hormone metabolism, Metabolic pathways

Full Length Full L.

GENE INFORMATION

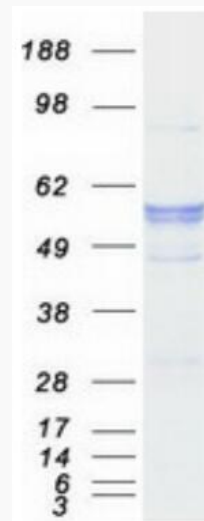
Gene Name CYP17A1 cytochrome P450 family 17 subfamily A member 1 [Homo sapiens (human)]

 Tel: 1-631-559-9269 1-516-512-3133

 Email: info@creative-biomart.com  Fax: 1-631-938-8127

 45-1 Ramsey Road, Shirley, NY 11967, USA

Official Symbol	CYP17A1
Synonyms	CPT7; CYP17; S17AH; P450C17
Gene ID	1586
mRNA Refseq	NM_000102.4
Protein Refseq	NP_000093.1
MIM	609300
UniProt ID	P05093



Coomassie blue staining of purified CYP17A1 protein.

 Tel: 1-631-559-9269 1-516-512-3133

 Email: info@creative-biomart.com  Fax: 1-631-938-8127

 45-1 Ramsey Road, Shirley, NY 11967, USA