

## Recombinant Human CYP19A1 protein, His-tagged

Cat. No. CYP19A1-301H Lot. No. (See product label)

### SPECIFICATION

<b>Product Overview</b>	Recombinant Human CYP19A1 protein(NP_000094)(241-400 aa), fused to His tag, was expressed in E. coli.
<b>Species</b>	Human
<b>Source</b>	E.coli
<b>ProteinLength</b>	241-400 aa
<b>Form</b>	The purified protein was Lyophilized from sterile PBS (58mM Na <sub>2</sub> HPO <sub>4</sub> , 17mM NaH <sub>2</sub> PO <sub>4</sub> , 68mM NaCl, pH7.). 5 % trehalose and 5 % mannitol are added as protectants before lyophilization.
<b>AA Sequence</b>	YKKEYKSVKDLKDAIEVLIAEKRRRISTEEKLEECMDFATELILAEKRGDLTRENVNQC ILEMLIAAPDTMSVSLFFMLFLIAKHPNVEEAIKEIQTVIGERDIKIDDIQKLKVMENFIY ESMRYQPVVDLVMRKALEDDVIDGYPVKKGTNIIILNIGR
<b>Purity</b>	90%, by SDS-PAGE with Coomassie Brilliant Blue staining.
<b>Storage</b>	Short-term storage: Store at 2-8°C for (1-2 weeks). Long-term storage: Aliquot and store at -20°C to -80°C for up to 3 months, buffer containing 50% glycerol is recommended for reconstitution. Avoid repeat freeze-thaw cycles.
<b>Reconstitution</b>	Reconstitute at 0.25 g/μl in 200 μl sterile water for short-term storage.

 Tel: 1-631-559-9269 1-516-512-3133

 Email: [info@creative-biomart.com](mailto:info@creative-biomart.com)  Fax: 1-631-938-8127

 45-1 Ramsey Road, Shirley, NY 11967, USA



Reconstitution with 200 µl 50% glycerol solution is recommended for longer term storage (see Stability and Storage for more details).

## GENE INFORMATION

<b>Gene Name</b>	CYP19A1 cytochrome P450 family 19 subfamily A member 1 [ Homo sapiens (human) ]
<b>Official Symbol</b>	CYP19A1
<b>Synonyms</b>	ARO; ARO1; CPV1; CYAR; CYP19; CYPXIX; P-450AROM
<b>Gene ID</b>	1588
<b>mRNA Refseq</b>	NM_000103.4
<b>Protein Refseq</b>	NP_000094
<b>MIM</b>	107910
<b>UniProt ID</b>	P11511

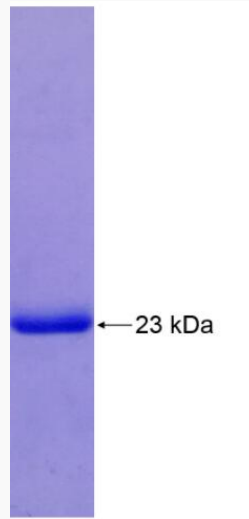
 Tel: 1-631-559-9269 1-516-512-3133

 Email: [info@creative-biomart.com](mailto:info@creative-biomart.com)  Fax: 1-631-938-8127

 45-1 Ramsey Road, Shirley, NY 11967, USA



SDS-PAGE



Tel: 1-631-559-9269 1-516-512-3133

Email: [info@creative-biomart.com](mailto:info@creative-biomart.com) Fax: 1-631-938-8127

45-1 Ramsey Road, Shirley, NY 11967, USA