

Recombinant Human CYP1A1 protein, His-tagged

Cat. No. CYP1A1-7962H Lot. No. (See product label)

SPECIFICATION

Product Overview	Recombinant Human CYP1A1 aa. (Met1~Ala250) fused with N-terminal His tag was produced in E. coli cells.
Species	Human
Source	E.coli
ProteinLength	Met1~Ala250
Description	<p>This gene, CYP1A1, encodes a member of the cytochrome P450 superfamily of enzymes. The cytochrome P450 proteins are monooxygenases which catalyze many reactions involved in drug metabolism and synthesis of cholesterol, steroids and other lipids. This protein localizes to the endoplasmic reticulum and its expression is induced by some polycyclic aromatic hydrocarbons (PAHs), some of which are found in cigarette smoke. The enzyme's endogenous substrate is unknown; however, it is able to metabolize some PAHs to carcinogenic intermediates. The gene has been associated with lung cancer risk. A related family member, CYP1A2, is located approximately 25 kb away from CYP1A1 on chromosome 15. Alternative splicing results in multiple transcript variants encoding distinct isoforms.</p>
Form	Freeze-dried powder
Molecular Mass	28kDa as determined by SDS-PAGE reducing conditions.
Endotoxin	<1.0EU per 1ug (determined by the LAL method)

 Tel: 1-631-559-9269 1-516-512-3133

 Email: info@creative-biomart.com  Fax: 1-631-938-8127

 45-1 Ramsey Road, Shirley, NY 11967, USA

Purity	>98%
Characteristic	The isoelectric point is 9.
Applications	Positive Control; Immunogen; SDS-PAGE; WB
Stability	The thermal stability is described by the loss rate of the target protein. The loss rate was determined by accelerated thermal degradation test, that is, incubate the protein at 37°C for 48h, and no obvious degradation and precipitation were observed. (Referring from China Biological Products Standard, which was calculated by the Arrhenius equation.) The loss of this protein is less than 5% within the expiration date under appropriate storage condition.
Storage	Avoid repeated freeze/thaw cycles. Store at 2-8°C for one month. Aliquot and store at -80°C for 12 months.
Concentration	200µg/mL
Storage Buffer	20mM Tris, 150mM NaCl, pH8.0, containing 1mM EDTA, 1mM DTT, 0.01% sarcosyl, 5%Trehalose and Proclin300.
Reconstitution	Reconstitute in 20mM Tris, 150mM NaCl (pH8.0) to a concentration of 0.1-1.0 mg/mL. Do not vortex.

GENE INFORMATION

Gene Name	CYP1A1 cytochrome P450 family 1 subfamily A member 1 [Homo sapiens (human)]
Official Symbol	CYP1A1
Synonyms	CYP1A1; cytochrome P450 family 1 subfamily A member 1; AHH; AHRR; CP11;

 Tel: 1-631-559-9269 1-516-512-3133

 Email: info@creative-biomart.com  Fax: 1-631-938-8127

 45-1 Ramsey Road, Shirley, NY 11967, USA

CYP1; CYPIA1; P1-450; P450-C; P450DX; cytochrome P450 1A1; aryl hydrocarbon hydroxylase; cytochrome P1-450, dioxin-inducible; cytochrome P450 form 6; cytochrome P450, family 1, subfamily A, polypeptide 1; cytochrome P450, subfamily I (aromatic compound-inducible), polypeptide 1; cytochrome P450-C; cytochrome P450-P1; flavoprotein-linked monooxygenase; xenobiotic monooxygenase

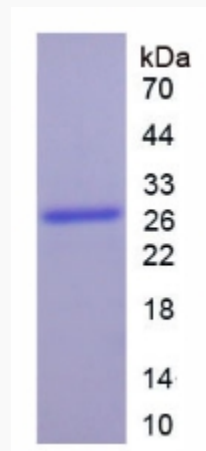
Gene ID [1543](#)

mRNA Refseq [NM_000499.4](#)

Protein Refseq [NP_000490.1](#)

UniProt ID [P04798](#)

SDS-PAGE



 Tel: 1-631-559-9269 1-516-512-3133

 Email: info@creative-biomart.com  Fax: 1-631-938-8127

 45-1 Ramsey Road, Shirley, NY 11967, USA