

Recombinant Rat CYP1B1 Protein (1-543 aa), His-tagged

Cat. No. CYP1B1-1939R **Lot. No.** (See product label)

SPECIFICATION

Product Overview	Recombinant Rat CYP1B1 Protein (1-543 aa) is produced by E. coli expression system. This protein is fused with a 6xHis tag at the N-terminal. Research Area: Metabolism. Protein Description: Full Length.
Species	Rat
Source	E.coli
ProteinLength	1-543 aa
Description	Cytochromes P450 are a group of heme-thiolate monooxygenases. In liver microsomes, this enzyme is involved in an NADPH-dependent electron transport pathway. It oxidizes a variety of structurally unrelated compounds, including steroids, fatty acids, retinoid and xenobiotics. Preferentially oxidizes 17beta-estradiol to the carcinogenic 4-hydroxy derivative, and a variety of procarcinogenic compounds to their activated forms, including polycyclic aromatic hydrocarbons. Promotes angiogenesis by removing cellular oxygenation products, thereby decreasing oxidative stress, release of antiangiogenic factor THBS2, then allowing endothelial cells migration, cell adhesion and capillary morphogenesis. These changes are concomitant with the endothelial nitric oxide synthase activity and nitric oxide synthesis. Plays an important role in the regulation of perivascular cell proliferation, migration, and survival through modulation of the intracellular oxidative state and NF-kappa-B expression and/or activity, during angiogenesis. Contributes to oxidative homeostasis and ultrastructural organization and function of trabecular meshwork

 Tel: 1-631-559-9269 1-516-512-3133

 Email: info@creative-biomart.com  Fax: 1-631-938-8127

 45-1 Ramsey Road, Shirley, NY 11967, USA

tissue through modulation of POSTN expression.

Form Tris-based buffer, 50% glycerol

Molecular Mass 64.6 kDa

AA Sequence

MATSLSADSPQQLSSLSTQQTILLLLVSVLAIVHLGQWLLRQWRRKPWSSPPGPPF
 WPLIGNAASVGRASHLYFARLARRYGDVFQIRLGSCPVVVLNGESAIHQALVQQGG
 VFADRPFFASFRVVS GGRSLAFGHYSERWKERRRAAYGTMRAFSTRHPRSRGLLE
 GHALGEARELVAVLVRRRCAGGACLDPTQPIIVAVANVMSAVCFGCRYNHDDAEFLE
 LLSHNEEFGRTVGAGSLVDVMPWLQLFPNPVRTIFREFEQINRNFSNFVLDKFLRHR
 ESLVPGAAPRDMMDAFILSAEKKATGDPGDSPLDLEDVPATITDIFGASQDTLST
 ALLWLLILFTRYPDVQARVQAELDQVVGDRDLPCMSDQPNLPYVMAFLYESMRFTS
 FLPVTLPHATTANTFVLGYYIPKNTVVFVNQWSVNHDPKWSNPEDFDPARFLDKD
 GFINKALASSVMIFSVGKRRCIGEELSKLLFLFISILAHQCNFKANQNEPSNMSFSYG
 LSIKPKSFKIHVSLRESMKLLDSAVEKLAEEACQ

Purity > 90% as determined by SDS-PAGE.

Notes Repeated freezing and thawing is not recommended. Store working aliquots at 4 centigrade for up to one week.

Storage The shelf life is related to many factors, storage state, buffer ingredients, storage temperature and the stability of the protein itself. Generally, the shelf life of liquid form is 6 months at -20 centigrade/-80 centigrade. The shelf life of lyophilized form is 12 months at -20 centigrade/-80 centigrade.

Concentration A hardcopy of COA with reconstitution instruction is sent along with the products.

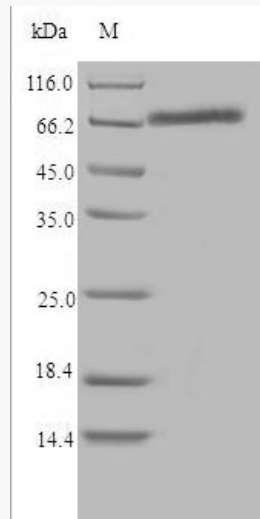
GENE INFORMATION

 Tel: 1-631-559-9269 1-516-512-3133

 Email: info@creative-biomart.com  Fax: 1-631-938-8127

 45-1 Ramsey Road, Shirley, NY 11967, USA

Gene Name	Cyp1b1 cytochrome P450, family 1, subfamily b, polypeptide 1 [<i>Rattus norvegicus</i>]
Official Symbol	CYP1B1
Synonyms	CYP1B1; CYP1B1; P450RAP; cytochrome P450RAP;
Gene ID	25426
mRNA Refseq	NM_012940
Protein Refseq	NP_037072
UniProt ID	Q64678



(Tris-Glycine gel) Discontinuous SDS-PAGE (reduced) with 5% enrichment gel and 15% separation gel.

Tel: 1-631-559-9269 1-516-512-3133

Email: info@creative-biomart.com Fax: 1-631-938-8127

45-1 Ramsey Road, Shirley, NY 11967, USA