

Recombinant Human CYP1B1 protein, GST-tagged

Cat. No. CYP1B1-28190TH **Lot. No.** (See product label)

SPECIFICATION

Product Overview	Recombinant Human CYP1B1(NP_000095, 453 a.a. - 542 a.a.) protein fused with GST-tag at N-terminal was expressed in wheat germ.
Species	Human
Source	Wheat Germ
Description	<p>This gene encodes a member of the cytochrome P450 superfamily of enzymes. The cytochrome P450 proteins are monooxygenases which catalyze many reactions involved in drug metabolism and synthesis of cholesterol, steroids and other lipids. The enzyme encoded by this gene localizes to the endoplasmic reticulum and metabolizes procarcinogens such as polycyclic aromatic hydrocarbons and 17beta-estradiol. Mutations in this gene have been associated with primary congenital glaucoma; therefore it is thought that the enzyme also metabolizes a signaling molecule involved in eye development, possibly a steroid.</p>
Form	50 mM Tris-HCl, 10 mM reduced Glutathione, pH=8.0 in the elution buffer.
Molecular Mass	35.64 kDa
AA Sequence	NKDLTSRVMIFSVGKRRRCIGEELSKMQLFLFISILAHQCDFRANPNEPAKMNF SYGLT IKPKSFKVNVTLRESMELLDSAVQNLQAKETC
Applications	AP; Array; ELISA; WB-Re

 Tel: 1-631-559-9269 1-516-512-3133

 Email: info@creative-biomart.com  Fax: 1-631-938-8127

 45-1 Ramsey Road, Shirley, NY 11967, USA

Notes Aliquot to avoid repeated freezing and thawing. Best use within three months from the date of receipt of this protein.

Storage Store at -80 centigrade.

GENE INFORMATION

Gene Name Cytochrome P450 family 1 subfamily B member 1 [Homo sapiens (human)]

Official Symbol CYP1B1

Synonyms CP1B; ASGD6; GLC3A; CYP1B1; P4501B1

Gene ID 1545

mRNA Refseq NM_000104.3

Protein Refseq NP_000095.2

MIM 601771

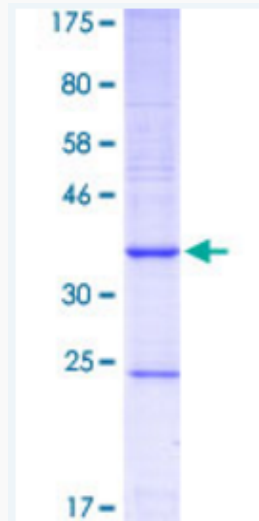
UniProt ID Q16678

 Tel: 1-631-559-9269 1-516-512-3133

 Email: info@creative-biomart.com  Fax: 1-631-938-8127

 45-1 Ramsey Road, Shirley, NY 11967, USA

12.5% SDS-PAGE
Stained with
Coomassie Blue.



 Tel: 1-631-559-9269 1-516-512-3133

 Email: info@creative-biomart.com  Fax: 1-631-938-8127

 45-1 Ramsey Road, Shirley, NY 11967, USA