

## Active Recombinant Human CYP1B1 protein, His-tagged

Cat. No. CYP1B1-595H Lot. No. (See product label)

### SPECIFICATION

<b>Product Overview</b>	Active Recombinant Human CYP1B1 protein(Q16678)(374-516 aa), fused with N-terminal His tag, was expressed in E.coli.
<b>Species</b>	Human
<b>Source</b>	E.coli
<b>ProteinLength</b>	374-516 aa
<b>Form</b>	20mM Tris, 150mM NaCl, pH8.0, containing 1mM EDTA, 1mM DTT, 0.01% SKL, 5% Trehalose and Proclin300.
<b>Bio-activity</b>	<p>Cytochrome P450 family 1 subfamily B member 1 (CYP1B1) is an enzyme, Which belongs to the cytochrome P450 superfamily. CYP1B1 can catalyze many reactions involved in drug metabolism and synthesis of cholesterol, steroids, and other lipids. Besides, Heat Shock Protein family B (small) member 2 (HSPb2) has been identified as an interactor of CYP1B1, thus a binding ELISA assay was conducted to detect the interaction of recombinant human CYP1B1 and recombinant human HSPb2, CYP1B1 were diluted serially in PBS, with 0.01% BSA (pH 7.4). Duplicate samples of 100uL were then transferred to HSPb2-coated microtiter wells and incubated for 2h at 37°C. Wells were washed with PBST and incubated for 1h with anti-CYP1B1 pAb, then aspirated and washed 3 times. After incubation with HRP labelled secondary antibody, wells were aspirated and washed 3 times. With the addition of substrate solution, wells were incubated 15-25 minutes at 37°C. Finally, add 50μ stop solution</p>

 Tel: 1-631-559-9269 1-516-512-3133

 Email: [info@creative-biomart.com](mailto:info@creative-biomart.com)  Fax: 1-631-938-8127

 45-1 Ramsey Road, Shirley, NY 11967, USA

to the wells and read at 450nm immediately. The binding activity of CYP1B1 and HSPb2 was shown, and this effect was in a dose dependent manner.

**Molecular Mass** 17.6kDa

**Purity** > 97%

**Storage** Avoid repeated freeze/thaw cycles. Store at 2-8°C for one month. Store at -20°C for 12 months. Aliquot and store at -80°C for 12 months.

**Reconstitution** Reconstitute in ddH<sub>2</sub>O to a concentration of 0.1-0.5 mg/mL. Do not vortex.

## GENE INFORMATION

**Gene Name** CYP1B1 cytochrome P450, family 1, subfamily B, polypeptide 1 [ Homo sapiens ]

**Official Symbol** CYP1B1

**Synonyms** CYP1B1; cytochrome P450, family 1, subfamily B, polypeptide 1; cytochrome P450, subfamily I (dioxin inducible), polypeptide 1 (glaucoma 3, primary infantile) , GLC3A; cytochrome P450 1B1; CP1B; microsomal monooxygenase; xenobiotic monooxygenase; aryl hydrocarbon hydroxylase; flavoprotein-linked monooxygenase; cytochrome P450, subfamily I (dioxin-inducible), polypeptide 1 (glaucoma 3, primary infantile); GLC3A; CYP1B1; P4501B1;

**Gene ID** 1545

**mRNA Refseq** NM\_000104

**Protein Refseq** NP\_000095

 Tel: 1-631-559-9269 1-516-512-3133

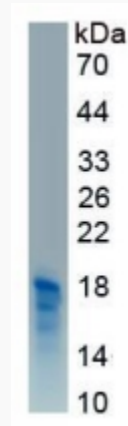
 Email: [info@creative-biomart.com](mailto:info@creative-biomart.com)  Fax: 1-631-938-8127

 45-1 Ramsey Road, Shirley, NY 11967, USA

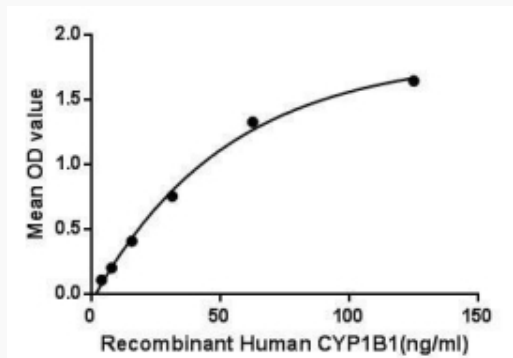
MIM 601771

UniProt ID Q16678

SDS-PAGE



Activity



Tel: 1-631-559-9269 1-516-512-3133

Email: [info@creative-biomart.com](mailto:info@creative-biomart.com) Fax: 1-631-938-8127

45-1 Ramsey Road, Shirley, NY 11967, USA