

Recombinant Human CYP21A2 Protein (Leu107-Gly390), N-His tagged

Cat. No. CYP21A2-1913H Lot. No. (See product label)

SPECIFICATION

Product Overview	Recombinant human CYP21A2 (Leu107-Gly390) fused with N-His tag was expressed in E. coli.
Species	Human
Source	E.coli
ProteinLength	Leu107-Gly390
Form	Lyophilized powder/frozen liquid
Molecular Mass	34.48 kDa
Purity	>90% as determined by SDS-PAGE
Notes	For research use only.
Storage	Use a manual defrost freezer and avoid repeated freeze thaw cycles. Store at 2 to 8 centigrade for one week. Store at -20 to -80 centigrade for twelve months from the date of receipt.
Storage Buffer	0.01M PBS, pH 7.4, 0.02% NLS
Reconstitution	Reconstitute in sterile water for a stock solution.

 Tel: 1-631-559-9269 1-516-512-3133

 Email: info@creative-biomart.com  Fax: 1-631-938-8127

 45-1 Ramsey Road, Shirley, NY 11967, USA

Shipping They are shipped out with dry ice/blue ice unless customers require otherwise.

GENE INFORMATION

Gene Name	CYP21A2 cytochrome P450, family 21, subfamily A, polypeptide 2 [Homo sapiens (human)]
Official Symbol	CYP21A2
Synonyms	CYP21A2; cytochrome P450, family 21, subfamily A, polypeptide 2; CYP21, CYP21B, cytochrome P450, subfamily XXIA (steroid 21 hydroxylase, congenital adrenal hyperplasia), polypeptide 2; steroid 21-hydroxylase; CA21H; CAH1; CPS1; P450c21B; Steroid 21 monooxygenase; 21-OHase; cytochrome P450 21; cytochrome P450 XXI; cytochrome P450-C21B; steroid 21-monooxygenase; cytochrome P450, subfamily XXIA (steroid 21-hydroxylase, congenital adrenal hyperplasia), polypeptide 2; CYP21; CYP21B; MGC150536; MGC150537;
Gene ID	1589
mRNA Refseq	NM_000500
Protein Refseq	NP_000491
MIM	613815
UniProt ID	P08686

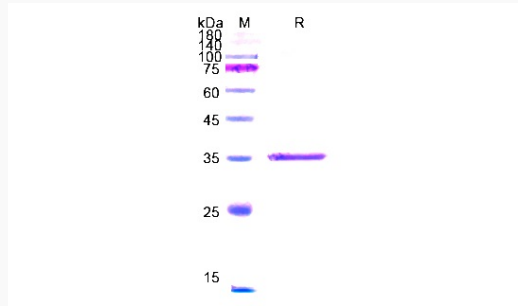
 Tel: 1-631-559-9269 1-516-512-3133

 Email: info@creative-biomart.com  Fax: 1-631-938-8127

 45-1 Ramsey Road, Shirley, NY 11967, USA



SDS-PAGE



Tel: 1-631-559-9269 1-516-512-3133

Email: info@creative-biomart.com Fax: 1-631-938-8127

45-1 Ramsey Road, Shirley, NY 11967, USA