

Recombinant Full Length Human CYP21A2 Protein, C-Flag-tagged

Cat. No. CYP21A2-24HFL **Lot. No.** (See product label)

SPECIFICATION

Product Overview	Recombinant Full Length Human CYP21A2 Protein, fused to Flag-tag at C-terminus, was expressed in Mammalian cells.
Species	Human
Source	Mammalian Cells
Description	<p>This gene encodes a member of the cytochrome P450 superfamily of enzymes. The cytochrome P450 proteins are monooxygenases which catalyze many reactions involved in drug metabolism and synthesis of cholesterol, steroids and other lipids. This protein localizes to the endoplasmic reticulum and hydroxylates steroids at the 21 position. Its activity is required for the synthesis of steroid hormones including cortisol and aldosterone. Mutations in this gene cause congenital adrenal hyperplasia. A related pseudogene is located near this gene; gene conversion events involving the functional gene and the pseudogene are thought to account for many cases of steroid 21-hydroxylase deficiency. Two transcript variants encoding different isoforms have been found for this gene.</p>
Form	25 mM Tris HCl, pH 7.3, 100 mM glycine, 10% glycerol.
Molecular Mass	55.8 kDa
AA Sequence	MLLLGLLLLLPLLAGARLLWNWWKLQSLHLPPLAPGFLHLLQPDLPIYLLGLTQKFGPI YRLHLGLQDVV VLNSKRTIEEAMVKKWADFAGRPEPLTYKLVSRNYPDLSLGDYSL

 Tel: 1-631-559-9269 1-516-512-3133

 Email: info@creative-biomart.com  Fax: 1-631-938-8127

 45-1 Ramsey Road, Shirley, NY 11967, USA

LWKAHKKLTRSALLLGIRDSMEPVV EQLTQEFCEMRAQPGTPVAIEEEFSLTCSII
 CYLTFGDKIKDDNLMPAYYKCIQEVVKTWSHWSIQIV DVIPFLRFFPNPGLRRLKQAI
 EKRDHIVEMQLRQHKEVAGQWRDMMDYMLQGVAQPSMEEGSGQLLEG HVHM
 AAVDLLIGGTETTANTLSWAVVFLHHPHPEIQRLQEELDHELPGGASSSRVVPYKDRA
 RLPLLNATI AEVLRLRPVVPLALPHRTTRPSSISGYDIPEGTVIIPNLQGAHLDETWE
 RPHEFWPDRFLEPGKNSRAL AFGCGARVCLGEPLARLELFVVLTRLLQAFTLLPSG
 DALPSLQPLPHCSVILKMQPFQVRLQPRGMGAHS
 PGQSQRTRTRPLEQKLISEEDLAANDILDYKDDDDKV

Purity	> 80% as determined by SDS-PAGE and Coomassie blue staining.
Stability	Stable for 12 months from the date of receipt of the product under proper storage and handling conditions. Avoid repeated freeze-thaw cycles.
Storage	Store at -80 centigrade.
Concentration	>50 ug/mL as determined by microplate BCA method.
Preparation	Recombinant protein was captured through anti-DDK affinity column followed by conventional chromatography steps.
Protein Families	Druggable Genome, P450
Protein Pathways	C21-Steroid hormone metabolism, Metabolic pathways
Full Length	Full L.

GENE INFORMATION

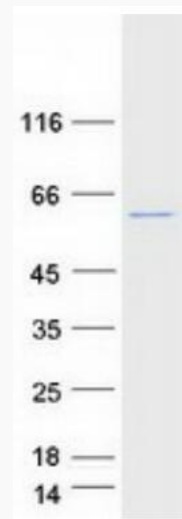
Gene Name [CYP21A2 cytochrome P450 family 21 subfamily A member 2 \[Homo sapiens \(human\) \]](#)

 Tel: 1-631-559-9269 1-516-512-3133

 Email: info@creative-biomart.com  Fax: 1-631-938-8127

 45-1 Ramsey Road, Shirley, NY 11967, USA

Official Symbol	CYP21A2
Synonyms	CAH1; CPS1; CA21H; CYP21; CYP21B; P450c21B
Gene ID	1589
mRNA Refseq	NM_000500.9
Protein Refseq	NP_000491.4
MIM	613815
UniProt ID	P08686



Coomassie blue staining of purified CYP21A2 protein.

 Tel: 1-631-559-9269 1-516-512-3133

 Email: info@creative-biomart.com  Fax: 1-631-938-8127

 45-1 Ramsey Road, Shirley, NY 11967, USA