

Recombinant Human CYP24A1 Protein (Gln37-Gly250), N-His tagged

Cat. No. CYP24A1-1914H Lot. No. (See product label)

SPECIFICATION

Product Overview	Recombinant human CYP24A1 (Gln37-Gly250) fused with N-His tag was expressed in E. coli.
Species	Human
Source	E.coli
ProteinLength	Gln37-Gly250
Form	Lyophilized powder/frozen liquid
Molecular Mass	26.83 kDa
Purity	>90% as determined by SDS-PAGE
Notes	For research use only.
Storage	Use a manual defrost freezer and avoid repeated freeze thaw cycles. Store at 2 to 8 centigrade for one week. Store at -20 to -80 centigrade for twelve months from the date of receipt.
Storage Buffer	0.01M PBS, pH 7.4, 0.02% NLS
Reconstitution	Reconstitute in sterile water for a stock solution.

 Tel: 1-631-559-9269 1-516-512-3133

 Email: info@creative-biomart.com  Fax: 1-631-938-8127

 45-1 Ramsey Road, Shirley, NY 11967, USA

Shipping They are shipped out with dry ice/blue ice unless customers require otherwise.

GENE INFORMATION

Gene Name CYP24A1 cytochrome P450, family 24, subfamily A, polypeptide 1 [Homo sapiens (human)]

Official Symbol CYP24A1

Synonyms CYP24A1; cytochrome P450, family 24, subfamily A, polypeptide 1; CYP24, cytochrome P450, subfamily XXIV (vitamin D 24 hydroxylase); 1, 25-dihydroxyvitamin D (3) 24-hydroxylase, mitochondrial; CP24; P450 CC24; 24-OHase; cytochrome P450 24A1; cytochrome P450-CC24; vitamin D 24-hydroxylase; exo-mitochondrial protein; vitamin D (3) 24-hydroxylase; 1, 25-@dihydroxyvitamin D3 24-hydroxylase; cytochrome P450, subfamily XXIV (vitamin D 24-hydroxylase); HCAI; CYP24; P450-CC24; MGC126273; MGC126274;

Gene ID 1591

mRNA Refseq NM_000782

Protein Refseq NP_000773

MIM 126065

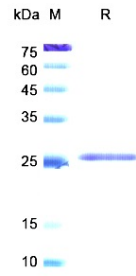
UniProt ID Q07973

 Tel: 1-631-559-9269 1-516-512-3133

 Email: info@creative-biomart.com  Fax: 1-631-938-8127

 45-1 Ramsey Road, Shirley, NY 11967, USA

SDS-PAGE



 Tel: 1-631-559-9269 1-516-512-3133

 Email: info@creative-biomart.com  Fax: 1-631-938-8127

 45-1 Ramsey Road, Shirley, NY 11967, USA