

# Recombinant Full Length Human CYP26A1 Protein, C-Flag-tagged

**Cat. No.** CYP26A1-1877HFL    **Lot. No.** (See product label)

## SPECIFICATION

<b>Product Overview</b>	Recombinant Full Length Human CYP26A1 Protein, fused to Flag-tag at C-terminus, was expressed in Mammalian cells.
<b>Species</b>	Human
<b>Source</b>	Mammalian Cells
<b>Description</b>	<p>This gene encodes a member of the cytochrome P450 superfamily of enzymes. The cytochrome P450 proteins are monooxygenases which catalyze many reactions involved in drug metabolism and synthesis of cholesterol, steroids and other lipids.</p> <p>This endoplasmic reticulum protein acts on retinoids, including all-trans-retinoic acid (RA), with both 4-hydroxylation and 18-hydroxylation activities. This enzyme regulates the cellular level of retinoic acid which is involved in regulation of gene expression in both embryonic and adult tissues. Two alternatively spliced transcript variants of this gene, which encode the distinct isoforms, have been reported.</p>
<b>Form</b>	25 mM Tris HCl, pH 7.3, 100 mM glycine, 10% glycerol.
<b>Molecular Mass</b>	56 kDa
<b>AA Sequence</b>	<p>MGLPALLASALCTFVLP LLLFLAAIKLWDLYCVSGRDRSCALPLPPGTMGFPFFGETL            QMVLQRRKFLQM KRRKYGFIYKTHLFG RPTVRVMGADNVRRILLGEHRLVSVHWP            ASVRTILGSGCLSNLHDSSHKQRKKVI MRAFSREALECYVPVITEEVGSSLEQWLSC            GERGLLVYPEVKRLMFRIAMRILLGCEPQLAGDGDSEQQL VEAFEEMTRNLFSLPID</p>

 Tel: 1-631-559-9269    1-516-512-3133

 Email: [info@creative-biomart.com](mailto:info@creative-biomart.com)     Fax: 1-631-938-8127

 45-1 Ramsey Road, Shirley, NY 11967, USA

VPFSGLYRGMKARNLIHARIEQNIRAKICGLRASEAGQGCKDALQLLIEHSWE RGER  
 LDMQALKQSSTELLFGGHETTASAATSLITYLGLYPHVLQKVREELKSKGLLCKSNQ  
 DNKLDMEIL EQLKYIGCVIKETLRLNPPVPGGFRVALKTFELNGYQIPKGWNVIYSIC  
 DTHDVAEIFTNKEEFNPDRFM LPHPEDASRFSFIPFGGGLRSCVKGKEFAKILLKIFTV  
 ELARHCDWQLLNGPPTMKTSPVYPVDNLPARF THFHGEI TRTRPLEQKLISEEDL  
 AANDILDYKDDDDKV

<b>Purity</b>	> 80% as determined by SDS-PAGE and Coomassie blue staining.
<b>Stability</b>	Stable for 12 months from the date of receipt of the product under proper storage and handling conditions. Avoid repeated freeze-thaw cycles.
<b>Storage</b>	Store at -80 centigrade.
<b>Concentration</b>	>50 ug/mL as determined by microplate BCA method.
<b>Preparation</b>	Recombinant protein was captured through anti-DDK affinity column followed by conventional chromatography steps.
<b>Protein Families</b>	Druggable Genome, P450, Transmembrane
<b>Protein Pathways</b>	Retinol metabolism
<b>Full Length</b>	Full L.

## GENE INFORMATION

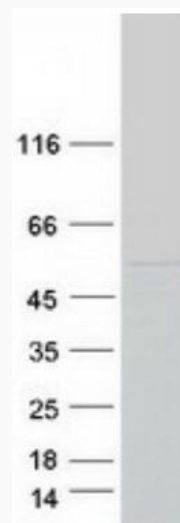
<b>Gene Name</b>	CYP26A1 cytochrome P450 family 26 subfamily A member 1 [ Homo sapiens (human) ]
<b>Official Symbol</b>	CYP26A1

 Tel: 1-631-559-9269 1-516-512-3133

 Email: [info@creative-biomart.com](mailto:info@creative-biomart.com)  Fax: 1-631-938-8127

 45-1 Ramsey Road, Shirley, NY 11967, USA

<b>Synonyms</b>	CP26; CYP26; P450RAI; P450RAI1
<b>Gene ID</b>	<a href="#">1592</a>
<b>mRNA Refseq</b>	<a href="#">NM_000783.4</a>
<b>Protein Refseq</b>	<a href="#">NP_000774.2</a>
<b>MIM</b>	<a href="#">602239</a>
<b>UniProt ID</b>	<a href="#">O43174</a>



Coomassie blue staining of purified CYP26A1 protein.

 Tel: 1-631-559-9269 1-516-512-3133

 Email: [info@creative-biomart.com](mailto:info@creative-biomart.com)  Fax: 1-631-938-8127

 45-1 Ramsey Road, Shirley, NY 11967, USA