

Recombinant Human CYP26B1 Protein, GST-tagged

Cat. No. CYP26B1-2250H **Lot. No.** (See product label)

SPECIFICATION

Product Overview	Human CYP26B1 full-length ORF (NP_063938.1, 1 a.a. - 512 a.a.) recombinant protein with GST-tag at N-terminal.
Species	Human
Source	Wheat Germ
Description	This gene encodes a member of the cytochrome P450 superfamily. The cytochrome P450 proteins are monooxygenases which catalyze many reactions involved in drug metabolism and synthesis of cholesterol, steroids and other lipids. The encoded protein is localized to the endoplasmic reticulum, and functions as a critical regulator of all-trans retinoic acid levels by the specific inactivation of all-trans retinoic acid to hydroxylated forms. Mutations in this gene are associated with radiohumeral fusions and other skeletal and craniofacial anomalies, and increased levels of the encoded protein are associated with atherosclerotic lesions. Alternative splicing results in multiple transcript variants. [provided by RefSeq, Apr 2013]
Molecular Mass	83.9 kDa
AA Sequence	MLFEGLDLVSALATLAACLVSVTLLLAVSQQLWQLRWAATRDKSKLPIPKGSMGFP LIGETGHWLLQGSGFQSSRREKYGNVFKTHLLGRPLIRVTGAENVRKILMGEHHLVS TEWPRSTRMLLGPNTVSNISIGDIHRNKRKVFVSKIFSHEALESYLPKIQLVIQDTLRAW SSHPEAINVYQEAQKLTFRMAIRVLLGFSIPEEDLGHLFEVYQQFVDNVFSLPVDLPF SGYRRGIQARQILQKGLEKAIREKLQCTQGKDYLDALDLLIESSKEHGKEMTMQELK

 Tel: 1-631-559-9269 1-516-512-3133

 Email: info@creative-biomart.com  Fax: 1-631-938-8127

 45-1 Ramsey Road, Shirley, NY 11967, USA

DGTLELIFAAAYATTASASTSLIMQLLKHPTVLEKLRDELRAHGILHSGGCPCEGTLRLD
 TLSGLRYLDCVIKEVMRLFTPISGGYRTVLQTFELDGFQIPKGWSVMYSIRDTHDTAP
 VFKDVNVFDPDRFSQARSEDKDGRFHLYLPGGGVVRTCLGKHLAKLFLKVLAVELAS
 TSRFELATRTFPRITLVPVLHPVDGLSVKFFGLDSNQNEILPETEAMLSATV

Applications	Enzyme-linked Immunoabsorbent Assay Western Blot (Recombinant protein) Antibody Production Protein Array
Notes	Best use within three months from the date of receipt of this protein.
Storage	Store at -80 centigrade. Aliquot to avoid repeated freezing and thawing.
Storage Buffer	50 mM Tris-HCl, 10 mM reduced Glutathione, pH=8.0 in the elution buffer.

GENE INFORMATION

Gene Name	CYP26B1 cytochrome P450, family 26, subfamily B, polypeptide 1 [Homo sapiens]
Official Symbol	CYP26B1
Synonyms	CYP26B1; cytochrome P450, family 26, subfamily B, polypeptide 1; cytochrome P450 26B1; P450RAI 2; cytochrome P450 26A2; cytochrome P450RAI-2; cytochrome P450 CYP26B1 variant 2; retinoic acid-metabolizing cytochrome; cytochrome P450 retinoic acid-inactivating 2; cytochrome P450 retinoid metabolizing protein; RHFCA; CYP26A2; P450RAI2; P450RAI-2; MGC129613; DKFZp686G0638;
Gene ID	56603
mRNA Refseq	NM_019885

 Tel: 1-631-559-9269 1-516-512-3133

 Email: info@creative-biomart.com  Fax: 1-631-938-8127

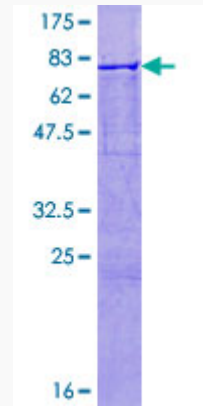
 45-1 Ramsey Road, Shirley, NY 11967, USA

Protein Refseq NP_063938

MIM 605207

UniProt ID Q9NR63

**Quality Control
Testing:**



12.5% SDS-PAGE Stained with Coomassie Blue.

 Tel: 1-631-559-9269 1-516-512-3133

 Email: info@creative-biomart.com  Fax: 1-631-938-8127

 45-1 Ramsey Road, Shirley, NY 11967, USA