

## Recombinant Human CYP26C1 Protein, GST-tagged

**Cat. No.** CYP26C1-2252H    **Lot. No.** (See product label)

### SPECIFICATION

<b>Product Overview</b>	Human CYP26C1 partial ORF ( NP_899230.2, 423 a.a. - 522 a.a.) recombinant protein with GST-tag at N-terminal.
<b>Species</b>	Human
<b>Source</b>	Wheat Germ
<b>Description</b>	<p>This gene encodes a member of the cytochrome P450 superfamily of enzymes. The cytochrome P450 proteins are monooxygenases which catalyze many reactions involved in drug metabolism and synthesis of cholesterol, steroids and other lipids.</p> <p>This enzyme is involved in the catabolism of all-trans- and 9-cis-retinoic acid, and thus contributes to the regulation of retinoic acid levels in cells and tissues. This gene is adjacent to a related gene on chromosome 10q23.33. [provided by RefSeq, Jul 2008]</p>
<b>Molecular Mass</b>	36.74 kDa
<b>AA Sequence</b>	SPPEGFDPERFGAAREDSRGASSRFHYIPFGGGARSCLGQELAQAVLQLLAVELVR TARWELATPAFPAMQTVPIVHPVDGLRLFFHPLTPSVAGNGLCL
<b>Applications</b>	<p>Enzyme-linked Immunoabsorbent Assay</p> <p>Western Blot (Recombinant protein)</p> <p>Antibody Production</p> <p>Protein Array</p>

 Tel: 1-631-559-9269    1-516-512-3133

 Email: [info@creative-biomart.com](mailto:info@creative-biomart.com)     Fax: 1-631-938-8127

 45-1 Ramsey Road, Shirley, NY 11967, USA

<b>Notes</b>	Best use within three months from the date of receipt of this protein.
<b>Storage</b>	Store at -80 centigrade. Aliquot to avoid repeated freezing and thawing.
<b>Storage Buffer</b>	50 mM Tris-HCl, 10 mM reduced Glutathione, pH=8.0 in the elution buffer.

## GENE INFORMATION

<b>Gene Name</b>	CYP26C1 cytochrome P450, family 26, subfamily C, polypeptide 1 [ Homo sapiens ]
<b>Official Symbol</b>	CYP26C1
<b>Synonyms</b>	CYP26C1; cytochrome P450, family 26, subfamily C, polypeptide 1; cytochrome P450 26C1; FLJ45301;
<b>Gene ID</b>	340665
<b>mRNA Refseq</b>	NM_183374
<b>Protein Refseq</b>	NP_899230
<b>MIM</b>	608428
<b>UniProt ID</b>	Q6V0L0

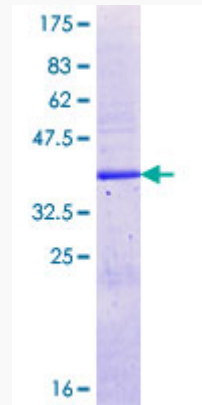
 Tel: 1-631-559-9269 1-516-512-3133

 Email: [info@creative-biomart.com](mailto:info@creative-biomart.com)  Fax: 1-631-938-8127

 45-1 Ramsey Road, Shirley, NY 11967, USA

**Quality Control**

**Testing:**



12.5% SDS-PAGE Stained with Coomassie Blue.

 Tel: 1-631-559-9269 1-516-512-3133

 Email: [info@creative-biomart.com](mailto:info@creative-biomart.com)  Fax: 1-631-938-8127

 45-1 Ramsey Road, Shirley, NY 11967, USA