

Recombinant Human CYP2A6 Protein, GST-tagged

Cat. No. CYP2A6-2258H **Lot. No.** (See product label)

SPECIFICATION

| | |
|-------------------------|---|
| Product Overview | Human CYP2A6 partial ORF (AAH28215, 395 a.a. - 494 a.a.) recombinant protein with GST-tag at N-terminal. |
| Species | Human |
| Source | Wheat Germ |
| Description | <p>This gene, CYP2A6, encodes a member of the cytochrome P450 superfamily of enzymes. The cytochrome P450 proteins are monooxygenases which catalyze many reactions involved in drug metabolism and synthesis of cholesterol, steroids and other lipids. This protein localizes to the endoplasmic reticulum and its expression is induced by phenobarbital. The enzyme is known to hydroxylate coumarin, and also metabolizes nicotine, aflatoxin B1, nitrosamines, and some pharmaceuticals.</p> <p>Individuals with certain allelic variants are said to have a poor metabolizer phenotype, meaning they do not efficiently metabolize coumarin or nicotine. This gene is part of a large cluster of cytochrome P450 genes from the CYP2A, CYP2B and CYP2F subfamilies on chromosome 19q. The gene was formerly referred to as CYP2A3; however, it has been renamed CYP2A6. [provided by RefSeq, Jul 2008]</p> |
| Molecular Mass | 36.74 kDa |
| AA Sequence | LGSVLRDPSFFSNPQDFNPQHFLNEKGQFKKSDAFVPPFSIGKRNCFGEGGLARMELFLFFTTVMQNFRLKSSQSPKDIDVSPKHVGFATIPRNYTMSFLPR |
| Applications | Enzyme-linked Immunoabsorbent Assay |

 Tel: 1-631-559-9269 1-516-512-3133

 Email: info@creative-biomart.com  Fax: 1-631-938-8127

 45-1 Ramsey Road, Shirley, NY 11967, USA

Western Blot (Recombinant protein)
 Antibody Production
 Protein Array

Notes Best use within three months from the date of receipt of this protein.

Storage Store at -80 centigrade. Aliquot to avoid repeated freezing and thawing.

Storage Buffer 50 mM Tris-HCl, 10 mM reduced Glutathione, pH=8.0 in the elution buffer.

GENE INFORMATION

Gene Name [CYP2A6 cytochrome P450, family 2, subfamily A, polypeptide 6 \[Homo sapiens \]](#)

Official Symbol [CYP2A6](#)

Synonyms

CYP2A6; cytochrome P450, family 2, subfamily A, polypeptide 6; CYP2A3, cytochrome P450, subfamily IIA (phenobarbital inducible), polypeptide 6; cytochrome P450 2A6; CPA6; CYP2A; cytochrome P450(I); cytochrome P450 IIA3; coumarin 7-hydroxylase; xenobiotic monooxygenase; flavoprotein-linked monooxygenase; cytochrome P450, subfamily IIA (phenobarbital-inducible), polypeptide 6; CYP2A3; P450PB; CYP1IA6; P450C2A;

Gene ID [1548](#)

mRNA Refseq [NM_000762](#)

Protein Refseq [NP_000753](#)

MIM [122720](#)

 Tel: 1-631-559-9269 1-516-512-3133

 Email: info@creative-biomart.com  Fax: 1-631-938-8127

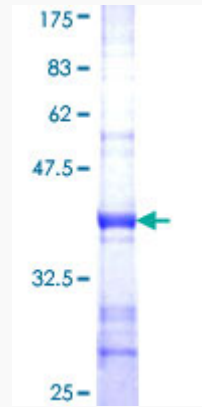
 45-1 Ramsey Road, Shirley, NY 11967, USA

UniProt ID

P11509

Quality Control

Testing:



12.5% SDS-PAGE Stained with Coomassie Blue.

 Tel: 1-631-559-9269 1-516-512-3133

 Email: info@creative-biomart.com  Fax: 1-631-938-8127

 45-1 Ramsey Road, Shirley, NY 11967, USA