

Recombinant Human CYP2A6 Protein, Myc/DDK-tagged, C13 and N15-labeled

Cat. No. CYP2A6-2732H **Lot. No.** (See product label)

SPECIFICATION

Product Overview	CYP2A6 MS Standard C13 and N15-labeled recombinant protein (NP_000753) with a C-terminal MYC/DDK tag, was expressed in HEK293 cells.
Species	Human
Source	HEK293
Description	<p>This gene, CYP2A6, encodes a member of the cytochrome P450 superfamily of enzymes. The cytochrome P450 proteins are monooxygenases which catalyze many reactions involved in drug metabolism and synthesis of cholesterol, steroids and other lipids. This protein localizes to the endoplasmic reticulum and its expression is induced by phenobarbital. The enzyme is known to hydroxylate coumarin, and also metabolizes nicotine, aflatoxin B1, nitrosamines, and some pharmaceuticals.</p> <p>Individuals with certain allelic variants are said to have a poor metabolizer phenotype, meaning they do not efficiently metabolize coumarin or nicotine. This gene is part of a large cluster of cytochrome P450 genes from the CYP2A, CYP2B and CYP2F subfamilies on chromosome 19q. The gene was formerly referred to as CYP2A3; however, it has been renamed CYP2A6.</p>
Molecular Mass	56.5 kDa
AA Sequence	MLASGMLLVALLVCLTVMVLMSVWQQRKSKGKLP PGPTLPFIGNYLQLNTEQMYN SLMKISERYGPVFTIHLGPRRVVVL CGHDAVREALVDQAE EFSGRGEQATFDWVFK

 Tel: 1-631-559-9269 1-516-512-3133

 Email: info@creative-biomart.com  Fax: 1-631-938-8127

 45-1 Ramsey Road, Shirley, NY 11967, USA

GYGVVFSNGERAKQLRRFSIATLRDFGVGKRGIEERIQEEAGFLIDALRGTGGANIDP
 TFFLSRTVSNVISSIVFGDRFDYKDKEFLSLLRMMLGIFQFTSTSTGQLYEMFSSVMK
 HLPGPQQQAFQLLQGLEDFIAKKVEHNQRTLDPNSPRDFIDSFLIRMQEEEEKNPNT
 FYLKNLVMTTLNLFIGGTETVSTTLRYGFLLLMKHPEVEAKVHEEIDRVIGKNRQPKF
 EDRAKMPYMEAVIHEIQRFGDVIPMSLARRVKKDTKFRDFFLPKGTEVYPMLGSLVR
 DPSFFSNPQDFNPQHFLNEKGQFKKSDAFVPFSIGKRNCFGEGLARMELFLFFTTV
 MQNFRKSSQSPKDIDVSPKHVGFATIPRNYTMSFLPRTRTRPLEQKLISEEDLAAN
 DILDYKDDDDKV

Purity	> 80% as determined by SDS-PAGE and Coomassie blue staining
Stability	Stable for 3 months from receipt of products under proper storage and handling conditions.
Storage	Store at -80 centigrade. Avoid repeated freeze-thaw cycles.
Concentration	50 µg/mL as determined by BCA
Storage Buffer	100 mM glycine, 25 mM Tris-HCl, pH 7.3.

GENE INFORMATION

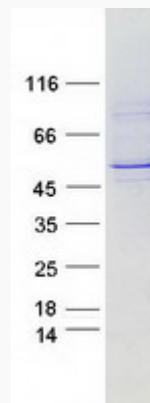
Gene Name	CYP2A6 cytochrome P450 family 2 subfamily A member 6 [Homo sapiens (human)]
Official Symbol	CYP2A6
Synonyms	CYP2A6; cytochrome P450, family 2, subfamily A, polypeptide 6; CYP2A3, cytochrome P450, subfamily IIA (phenobarbital inducible), polypeptide 6; cytochrome P450 2A6; CPA6; CYP2A; cytochrome P450(I); cytochrome P450 IIA3; coumarin 7-hydroxylase; xenobiotic monooxygenase; flavoprotein-linked monooxygenase; cytochrome P450, subfamily IIA (phenobarbital-inducible), polypeptide 6; CYP2A3;

 Tel: 1-631-559-9269 1-516-512-3133

 Email: info@creative-biomart.com  Fax: 1-631-938-8127

 45-1 Ramsey Road, Shirley, NY 11967, USA

P450PB; CYP11A6; P450C2A;

Gene ID 1548**mRNA Refseq** NM_000762**Protein Refseq** NP_000753**MIM** 122720**UniProt ID** P11509**SDS-PAGE** Tel: 1-631-559-9269 1-516-512-3133 Email: info@creative-biomart.com  Fax: 1-631-938-8127 45-1 Ramsey Road, Shirley, NY 11967, USA