

Recombinant Full Length Human CYP2B6 Protein, C-Flag-tagged

Cat. No. CYP2B6-1884HFL **Lot. No.** (See product label)

SPECIFICATION

Product Overview	Recombinant Full Length Human CYP2B6 Protein, fused to Flag-tag at C-terminus, was expressed in Mammalian cells.
Species	Human
Source	Mammalian Cells
Description	<p>This gene, CYP2B6, encodes a member of the cytochrome P450 superfamily of enzymes. The cytochrome P450 proteins are monooxygenases which catalyze many reactions involved in drug metabolism and synthesis of cholesterol, steroids and other lipids. This protein localizes to the endoplasmic reticulum and its expression is induced by phenobarbital. The enzyme is known to metabolize some xenobiotics, such as the anti-cancer drugs cyclophosphamide and ifosphamide. Transcript variants for this gene have been described; however, it has not been resolved whether these transcripts are in fact produced by this gene or by a closely related pseudogene, CYP2B7. Both the gene and the pseudogene are located in the middle of a CYP2A pseudogene found in a large cluster of cytochrome P450 genes from the CYP2A, CYP2B and CYP2F subfamilies on chromosome 19q.</p>
Form	25 mM Tris HCl, pH 7.3, 100 mM glycine, 10% glycerol.
Molecular Mass	56.1 kDa
AA Sequence	MELSVLLFLALLTGLLLLLLVQCHPNTHDRLPPGPRPLLLGNLLQMDRRGLLKSFLRF

 Tel: 1-631-559-9269 1-516-512-3133

 Email: info@creative-biomart.com  Fax: 1-631-938-8127

 45-1 Ramsey Road, Shirley, NY 11967, USA



REKYGDVFTVHL GPRPVVMLCGVEAIREALVDKAEAFSGRGKIAMVDPFFRGYGV
FANGNRWKVLRFRFSVTTMRDFGMGKR SVEERIQEEAQCLIEELRKS KALMDPTFL
FQSITANIICSIVFGKRFHYQDQEFLKMLNLFYQTFSLIS SVFGQLFELFSGFLKYFPG
AHRQVYKNLQEINAYIGHSVEKHRETLDPSAPKDLIDTYLLHMEKEKSNAH SEFSHQ
NLNLNTLSLFFAGTETTSTTLRYGFLMLKYPHVAERVYREIEQVIGPHRPPPELHDRA
KMPYTE AVIYEIQRFSDLLPMGVPHIVTQHTSFRGYIIPKDTEVFLILSTALHDPHYFE
KPDFANPDHFLDANGAL KKTEAFIPFSLGKRICLGEGIARAELFFFTTILQNFMSASP
VAPEDIDLTPQECGVGKIPPTYQIRFLP R TRTRPLEQKLISEEDLAANDILDYKDDDD
KV

Purity	> 80% as determined by SDS-PAGE and Coomassie blue staining.
Stability	Stable for 12 months from the date of receipt of the product under proper storage and handling conditions. Avoid repeated freeze-thaw cycles.
Storage	Store at -80 centigrade.
Concentration	>50 ug/mL as determined by microplate BCA method.
Preparation	Recombinant protein was captured through anti-DDK affinity column followed by conventional chromatography steps.
Protein Families	Druggable Genome, P450
Protein Pathways	Arachidonic acid metabolism, Drug metabolism - cytochrome P450, Metabolic pathways, Metabolism of xenobiotics by cytochrome P450, Retinol metabolism
Full Length	Full L.

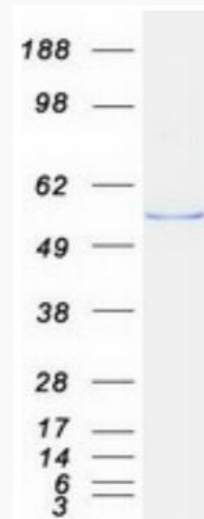
GENE INFORMATION

Tel: 1-631-559-9269 1-516-512-3133

Email: info@creative-biomart.com Fax: 1-631-938-8127

45-1 Ramsey Road, Shirley, NY 11967, USA

Gene Name	CYP2B6 cytochrome P450 family 2 subfamily B member 6 [Homo sapiens (human)]
Official Symbol	CYP2B6
Synonyms	CPB6; EFVM; IIB1; P450; CYP2B; CYP2B7; CYP2B7P; CYP11B6
Gene ID	1555
mRNA Refseq	NM_000767.5
Protein Refseq	NP_000758.1
MIM	123930
UniProt ID	P20813



Coomassie blue staining of purified CYP2B6 protein.

 Tel: 1-631-559-9269 1-516-512-3133

 Email: info@creative-biomart.com  Fax: 1-631-938-8127

 45-1 Ramsey Road, Shirley, NY 11967, USA