

# Recombinant Human CYP2C18 Protein, Myc/DDK-tagged, C13 and N15-labeled

**Cat. No.** CYP2C18-1195H    **Lot. No.** (See product label)

## SPECIFICATION

### Product Overview

CYP2C18 MS Standard C13 and N15-labeled recombinant protein (NP\_000763) with a C-terminal MYC/DDK tag, was expressed in HEK293 cells.

### Species

Human

### Source

HEK293

### Description

This gene encodes a member of the cytochrome P450 superfamily of enzymes. The cytochrome P450 proteins are monooxygenases which catalyze many reactions involved in drug metabolism and synthesis of cholesterol, steroids and other lipids. This protein localizes to the endoplasmic reticulum but its specific substrate has not yet been determined. The gene is located within a cluster of cytochrome P450 genes on chromosome 10q24. An additional gene, CYP2C17, was once thought to exist; however, CYP2C17 is now considered an artefact based on a chimera of CYP2C18 and CYP2C19. Alternatively spliced transcript variants encoding different isoforms have been found for this gene.

### Molecular Mass

55.5 kDa

### AA Sequence

MDPAVALVLCLSCFLLSLWRQSSGRGRLPSGPTPLPIIGNILQLDVKDMKSLTNFS  
 KVYGPVFTVYFGLKPIVVLHGYEAVKEALIDHGEEFSGRGSFPVAEKVNKGLGILFSN  
 GKRWKEIRRFCLMLTLRNFNGMGRSIEDRVQEEARCLVEELRKTNASPCDPTFILGCA  
 PCNVICSVIFHDFDYKDQRFLNLMKFNENLRILSSPWIQVCNNFPALIDYLPGSHN

 Tel: 1-631-559-9269    1-516-512-3133

 Email: [info@creative-biomart.com](mailto:info@creative-biomart.com)     Fax: 1-631-938-8127

 45-1 Ramsey Road, Shirley, NY 11967, USA

KIAENFAYIKSYVLERIKEHQESLDMNSARDFIDCFLIKMEQEKHNNQSEFTVESLIAT  
 VTDMFGAGTETTSTTLRYGLLLLLLKYPEVTAKVQEEIECVVGRNRSPCMQDRSHMP  
 YTDAVVHEIQRYIDLLPTNLPHAVTCDVKFKNYLIPKGTIITSLTSLVHNDKEFPNPEM  
 FDPGHFLDKSGNFKKSDFMPFSAGKRMCMGEGLARMELFLFTTILQNFNLKSQV  
 DPKDIDITPIANAFGRVPPLYQLCFIPVTRTRPLEQKLISEEDLAANDILDYKDDDDKV

**Purity** > 80% as determined by SDS-PAGE and Coomassie blue staining

**Stability** Stable for 3 months from receipt of products under proper storage and handling conditions.

**Storage** Store at -80 centigrade. Avoid repeated freeze-thaw cycles.

**Concentration** 50 µg/mL as determined by BCA

**Storage Buffer** 100 mM glycine, 25 mM Tris-HCl, pH 7.3.

## GENE INFORMATION

**Gene Name** CYP2C18 cytochrome P450 family 2 subfamily C member 18 [ Homo sapiens (human) ]

**Official Symbol** CYP2C18


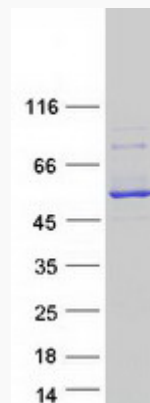
**Synonyms** CYP2C18; cytochrome P450, family 2, subfamily C, polypeptide 18; CYP2C17, cytochrome P450, subfamily IIC (mephenytoin 4 hydroxylase), polypeptide 18; cytochrome P450 2C18; CPCI; CYP2C; P450IIC17; CYP1IC18; cytochrome P450-6B/29C; microsomal monooxygenase; unspecific monooxygenase; flavoprotein-linked monooxygenase; (S)-mephenytoin hydroxylase associated cytochrome P450; cytochrome P450, subfamily IIC (mephenytoin 4-hydroxylase), polypeptide 17; cytochrome P450, subfamily IIC (mephenytoin 4-hydroxylase), polypeptide 18;

 Tel: 1-631-559-9269 1-516-512-3133

 Email: [info@creative-biomart.com](mailto:info@creative-biomart.com)  Fax: 1-631-938-8127

 45-1 Ramsey Road, Shirley, NY 11967, USA

CYP2C17; P450-6B/29C; DKFZp686I24235;

**Gene ID** 1562**mRNA Refseq** NM\_000772**Protein Refseq** NP\_000763**MIM** 601131**UniProt ID** P33260**SDS-PAGE** Tel: 1-631-559-9269 1-516-512-3133 Email: [info@creative-biomart.com](mailto:info@creative-biomart.com)  Fax: 1-631-938-8127 45-1 Ramsey Road, Shirley, NY 11967, USA