

## Recombinant Human CYP2C18 Protein, GST-tagged

Cat. No. CYP2C18-2261H Lot. No. (See product label)

### SPECIFICATION

<b>Product Overview</b>	Human CYP2C18 full-length ORF ( NP_000763.1, 1 a.a. - 490 a.a.) recombinant protein with GST-tag at N-terminal.
<b>Species</b>	Human
<b>Source</b>	Wheat Germ
<b>Description</b>	<p>This gene encodes a member of the cytochrome P450 superfamily of enzymes. The cytochrome P450 proteins are monooxygenases which catalyze many reactions involved in drug metabolism and synthesis of cholesterol, steroids and other lipids. This protein localizes to the endoplasmic reticulum but its specific substrate has not yet been determined. The gene is located within a cluster of cytochrome P450 genes on chromosome 10q24. An additional gene, CYP2C17, was once thought to exist; however, CYP2C17 is now considered an artefact based on a chimera of CYP2C18 and CYP2C19. Alternatively spliced transcript variants encoding different isoforms have been found for this gene. [provided by RefSeq, Jul 2008]</p>
<b>Molecular Mass</b>	82.1 kDa
<b>AA Sequence</b>	MDPAVALVLCLSCLFLLSLWRQSSGRGRLPSGPTPLPIIGNILQLDVKDMSKSLTNFS KVYGPVFTVYFGLKPIVVLHGYEAVKEALIDHGEEFSGRGSFPVAEKVNKGLGILFSN GKRWKEIRRFCLMTRLNFGMGKRSIEDRVQEEARCLVEELRKTNASPCDPTFILGCA PCNVICSVIFHDFDYKDQRFLNLMKFNENLRILSSPWIQVCNNFPALIDYLPGSHN KIAENFAYIKSYVLERIKEHQESLDMNSARDFIDCFLIKMEQEKHNNQSEFTVESLIAT

 Tel: 1-631-559-9269 1-516-512-3133

 Email: [info@creative-biomart.com](mailto:info@creative-biomart.com)  Fax: 1-631-938-8127

 45-1 Ramsey Road, Shirley, NY 11967, USA

VTDMFGAGTETTSTTLRYGLLLLLKYPEVTAKVQEEIECVVGRNRSPCMQDRSHMP  
 YTDAVVHEIQRYIDLLPTNLPHAVTCDVKFKNYLIPKGTIITSLTSVLHNDKEFPNPEM  
 FDPGHFLDKSGNFKKSDYFMPFSAGKRMCMGEGGLARMELFLFLTILQNFNLKSQV  
 DPKDIDITPIANAFGRVPPLYQLCFIPV

<b>Applications</b>	Enzyme-linked Immunoabsorbent Assay Western Blot (Recombinant protein) Antibody Production Protein Array
<b>Notes</b>	Best use within three months from the date of receipt of this protein.
<b>Storage</b>	Store at -80 centigrade. Aliquot to avoid repeated freezing and thawing.
<b>Storage Buffer</b>	50 mM Tris-HCl, 10 mM reduced Glutathione, pH=8.0 in the elution buffer.

## GENE INFORMATION

<b>Gene Name</b>	CYP2C18 cytochrome P450, family 2, subfamily C, polypeptide 18 [ Homo sapiens ]
<b>Official Symbol</b>	CYP2C18
<b>Synonyms</b>	CYP2C18; cytochrome P450, family 2, subfamily C, polypeptide 18; CYP2C17, cytochrome P450, subfamily IIC (mephenytoin 4 hydroxylase), polypeptide 18; cytochrome P450 2C18; CPCI; CYP2C; P450IIC17; CYP1IC18; cytochrome P450-6B/29C; microsomal monooxygenase; unspecific monooxygenase; flavoprotein-linked monooxygenase; (S)-mephenytoin hydroxylase associated cytochrome P450; cytochrome P450, subfamily IIC (mephenytoin 4-hydroxylase), polypeptide 17; cytochrome P450, subfamily IIC (mephenytoin 4-hydroxylase), polypeptide 18; CYP2C17; P450-6B/29C; DKFZp686I24235;

 Tel: 1-631-559-9269 1-516-512-3133

 Email: [info@creative-biomart.com](mailto:info@creative-biomart.com)  Fax: 1-631-938-8127

 45-1 Ramsey Road, Shirley, NY 11967, USA

Gene ID 1562

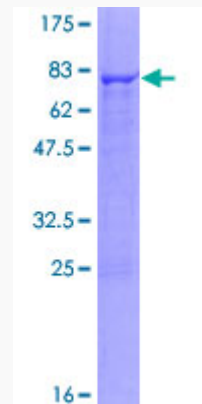
mRNA Refseq NM\_000772

Protein Refseq NP\_000763

MIM 601131

UniProt ID P33260

Quality Control  
Testing:



12.5% SDS-PAGE Stained with Coomassie Blue.

Tel: 1-631-559-9269 1-516-512-3133

Email: [info@creative-biomart.com](mailto:info@creative-biomart.com) Fax: 1-631-938-8127

45-1 Ramsey Road, Shirley, NY 11967, USA