

## Recombinant Mouse CYP2E1 Protein (2-493 aa), His-tagged

Cat. No. CYP2E1-1373M Lot. No. (See product label)

### SPECIFICATION

**Product Overview** Recombinant Mouse CYP2E1 Protein (2-493 aa) is produced by Yeast expression system. This protein is fused with a 6xHis tag at the N-terminal. Protein Description: Full Length of Mature Protein.

**Species** Mouse

**Source** Yeast

**ProteinLength** 2-493 aa

**Description** Metabolizes several precarcinogens, drugs, and solvents to reactive metabolites.

**Form** Tris-based buffer, 50% glycerol

**Molecular Mass** 58.7 kDa

**AA Sequence**

```

AVLGITVALLVWIATLLLVSIWKQIYRSWNLPPGPFPIFFGNIFQLDLKDIPKSLTKLAK
RFGPVFTLHLGQRRIVVLHGYKAVKEVLLNHKNEFSGRGDIPVFQEYKNKGIIFNNGP
TWKDVRRFSL SILRDWGMGKQGNEARIQREAHFLVEELKKTGQPFDPTFLIGCAP
CNVIADILFNKRFDYDDKKCLELMSLFNENFYLLSTPWIQAYNYFSDYLQYLPGSHRK
VMKNVSEIRQYTLGKAKEHLKSLDINCPRDVTDCLLIEMEKEKHSQEPMYTMENISVT
LADLFFAGTETTSTTLRYGILLMKYPEIEEKLHEEIDRVIGPSRAPAVRDRMNMPYM
DAVVHEIQRFINLVPSNLPHEATRDTVFRGYVIPKGTVVIPTLDSLLFDNYEFPDPETF
KPEHFLNENGFKYSDYFKAFSAGKRVCVGEGLARMELFLLLSAILQHFNLKSLVDP
KDIDLSPVTIGFGSIPREFKLCVIPRS
    
```

Tel: 1-631-559-9269 1-516-512-3133

Email: [info@creative-biomart.com](mailto:info@creative-biomart.com) Fax: 1-631-938-8127

45-1 Ramsey Road, Shirley, NY 11967, USA

<b>Purity</b>	> 90% as determined by SDS-PAGE.
<b>Notes</b>	Repeated freezing and thawing is not recommended. Store working aliquots at 4 centigrade for up to one week.
<b>Storage</b>	The shelf life is related to many factors, storage state, buffer ingredients, storage temperature and the stability of the protein itself. Generally, the shelf life of liquid form is 6 months at -20 centigrade/-80 centigrade. The shelf life of lyophilized form is 12 months at -20 centigrade/-80 centigrade.
<b>Concentration</b>	A hardcopy of COA with reconstitution instruction is sent along with the products.

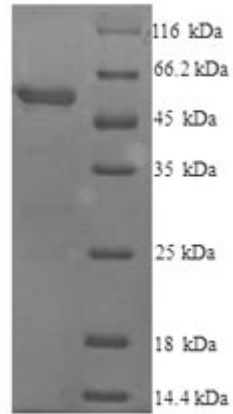
## GENE INFORMATION

<b>Gene Name</b>	Cyp2e1 cytochrome P450, family 2, subfamily e, polypeptide 1 [ <i>Mus musculus</i> ]
<b>Official Symbol</b>	CYP2E1
<b>Synonyms</b>	CYP2E1; CYP11E1; cytochrome P450-J; Cyp2e;
<b>Gene ID</b>	13106
<b>mRNA Refseq</b>	NM_021282
<b>Protein Refseq</b>	NP_067257
<b>UniProt ID</b>	Q05421

 Tel: 1-631-559-9269 1-516-512-3133

 Email: [info@creative-biomart.com](mailto:info@creative-biomart.com)  Fax: 1-631-938-8127

 45-1 Ramsey Road, Shirley, NY 11967, USA



(Tris-Glycine gel) Discontinuous SDS-PAGE (reduced) with 5% enrichment gel and 15% separation gel.

 Tel: 1-631-559-9269 1-516-512-3133

 Email: [info@creative-biomart.com](mailto:info@creative-biomart.com)  Fax: 1-631-938-8127

 45-1 Ramsey Road, Shirley, NY 11967, USA