

Recombinant Human CYP2E1 Protein, GST-tagged

Cat. No. CYP2E1-2265H **Lot. No.** (See product label)

SPECIFICATION

| | |
|-------------------------|---|
| Product Overview | Human CYP2E1 full-length ORF (NP_000764.1, 1 a.a. - 493 a.a.) recombinant protein with GST-tag at N-terminal. |
| Species | Human |
| Source | Wheat Germ |
| Description | <p>This gene encodes a member of the cytochrome P450 superfamily of enzymes. The cytochrome P450 proteins are monooxygenases which catalyze many reactions involved in drug metabolism and synthesis of cholesterol, steroids and other lipids. This protein localizes to the endoplasmic reticulum and is induced by ethanol, the diabetic state, and starvation. The enzyme metabolizes both endogenous substrates, such as ethanol, acetone, and acetal, as well as exogenous substrates including benzene, carbon tetrachloride, ethylene glycol, and nitrosamines which are premutagens found in cigarette smoke. Due to its many substrates, this enzyme may be involved in such varied processes as gluconeogenesis, hepatic cirrhosis, diabetes, and cancer. [provided by RefSeq, Jul 2008]</p> |
| Molecular Mass | 83.2 kDa |
| AA Sequence | <p>MSALGVTVALLVWAAFLLLVS MWRQVHSSWNLP PGPFLPIIGNL FQLELKNIPKSFT RLAQRFGPVFTLYVGSQRMVVMHGYKAVKEALLDYKDEFSGRGDLP AFHAHRDRG IIFNNGPTWKDIRRFS LTTLRNYGMGKQGNESRIQREAHF LLEALRKTQGQPFDP TF LIGCAPCNVIADILFRKHFDYNDEKFLRLMYLFNENFHLLSTPWLQLYNNFPSFLHYL</p> |

 Tel: 1-631-559-9269 1-516-512-3133

 Email: info@creative-biomart.com  Fax: 1-631-938-8127

 45-1 Ramsey Road, Shirley, NY 11967, USA

PGSHRKVIKNVAEVKEYVSERVKEHHQSLDPNCPRDLTDCLLVEMEKEKHSAERLY
 TMDGITVTVADLFFAGTETTSTLLRYGLLILMKYPEIEEKLHEEIDRVIGPSRIPAIDR
 QEMPYMDAVVHEIQRFITLVPSNLPHEATRDTIFRGYLIPKGTVVVPTLDSVLYDNQE
 FPDPEKFKPEHFLNENGGFKYSDYFKPFSTGKRVCAGEGLARMELFLLLCAILQHFN
 LKPLVDPKDIDLSPIHIGFGCIPPRYKLCVIPRS

Applications
 Enzyme-linked Immunoabsorbent Assay
 Western Blot (Recombinant protein)
 Antibody Production
 Protein Array

Notes Best use within three months from the date of receipt of this protein.

Storage Store at -80 centigrade. Aliquot to avoid repeated freezing and thawing.

Storage Buffer 50 mM Tris-HCl, 10 mM reduced Glutathione, pH=8.0 in the elution buffer.

GENE INFORMATION

Gene Name CYP2E1 cytochrome P450 family 2 subfamily E member 1 [Homo sapiens (human)]

Official Symbol CYP2E1

Synonyms CYP2E1; cytochrome P450 family 2 subfamily E member 1; Cytochrome P450 Family 2 Subfamily E Member 1; Cytochrome P450, Subfamily IIE (Ethanol-Inducible), Polypeptide 1; Cytochrome P450, Family 2, Subfamily E, Polypeptide 1; 4-Nitrophenol 2-Hydroxylase; Cytochrome P450-J; CYPIIE1; CYP2E; Flavoprotein-Linked Monooxygenase; Microsomal Monooxygenase; Xenobiotic Monooxygenase; Cytochrome P450 2E1; EC 1.14.13.n7; EC 1.14.14.1; EC 1.14.13.-; P450C2E; P450-J; CPE1; cytochrome P450 2E1; 4-nitrophenol 2-hydroxylase; CYPIIE1; cytochrome P450, family 2, subfamily E, polypeptide 1; cytochrome P450, subfamily IIE (ethanol-

 Tel: 1-631-559-9269 1-516-512-3133

 Email: info@creative-biomart.com  Fax: 1-631-938-8127

 45-1 Ramsey Road, Shirley, NY 11967, USA

inducible), polypeptide 1; cytochrome P450-J; flavoprotein-linked monooxygenase; microsomal monooxygenase; xenobiotic monooxygenase; EC 1.14.13.n7

Gene ID 1571

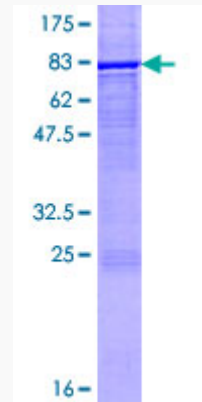
mRNA Refseq NM_000773

Protein Refseq NP_000764

MIM 124040

UniProt ID P05181

**Quality Control
Testing:**



12.5% SDS-PAGE Stained with Coomassie Blue.

 Tel: 1-631-559-9269 1-516-512-3133

 Email: info@creative-biomart.com  Fax: 1-631-938-8127

 45-1 Ramsey Road, Shirley, NY 11967, USA