

# Recombinant Human CYP2E1 Protein, MYC/DDK-tagged, C13 and N15-labeled

**Cat. No.** CYP2E1-430H    **Lot. No.** (See product label)

## SPECIFICATION

<b>Product Overview</b>	CYP2E1 MS Standard C13 and N15-labeled recombinant protein (NP_000764) with a C-terminal MYC/DDK tag, was expressed in HEK293 cells.
<b>Species</b>	Human
<b>Source</b>	HEK293
<b>Description</b>	<p>This gene encodes a member of the cytochrome P450 superfamily of enzymes. The cytochrome P450 proteins are monooxygenases which catalyze many reactions involved in drug metabolism and synthesis of cholesterol, steroids and other lipids. This protein localizes to the endoplasmic reticulum and is induced by ethanol, the diabetic state, and starvation. The enzyme metabolizes both endogenous substrates, such as ethanol, acetone, and acetal, as well as exogenous substrates including benzene, carbon tetrachloride, ethylene glycol, and nitrosamines which are premutagens found in cigarette smoke. Due to its many substrates, this enzyme may be involved in such varied processes as gluconeogenesis, hepatic cirrhosis, diabetes, and cancer. [provided by RefSeq, Jul 2008]</p>
<b>Molecular Mass</b>	56.7 kDa
<b>AA Sequence</b>	MSALGVTVALLVWAAFLLLVSMMWRQVHSSWNLPPGPFPLPIIGNLFQLELKNIPKSFT RLAQRFGPVFTLYVGSQRMVVMHGYKAVKEALLDYKDEFSGRGDLPAFHAHRDRG IIFNNGPTWKDIRRFSLLTLRNYGMGKQGNESRIQREAHFLEALRKTQGQPFDPPTF

 Tel: 1-631-559-9269    1-516-512-3133

 Email: [info@creative-biomart.com](mailto:info@creative-biomart.com)     Fax: 1-631-938-8127

 45-1 Ramsey Road, Shirley, NY 11967, USA

LIGCAPCNVIADILFRKHFDYNDEKFLRLMYLFNENFHLLSTPWLQLYNNFPSFLHYL  
 PGSHRKVIKNVAEVKEYVSERVKEHHQSLDPNCPRDLTDCLLVEMEKEKHSERLY  
 TMDGITVTVADLFFAGTETTSTTLRYGLLILMKYPEIEEKLHEEIDRVIGPSRIPAIDR  
 QEMPYMDAVVHEIQRFITLVPSNLPHEATRDTIFRGLYIPKGTVVVPTLDSVLYDNQE  
 FPDPEKFKPEHFLNENGGFKYSDYFKPFSTGKRV CAGEGLARMELFLLLCAILQHFN  
 LKPLVDPKDIDLSPHIGFGCIPPRYKLCVIPRSTRTRPLEQKLISEEDLAANDILDYKD  
 DDDKV

**Purity** > 80% as determined by SDS-PAGE and Coomassie blue staining

**Stability** Stable for 3 months from receipt of products under proper storage and handling conditions.

**Storage** Store at -80 centigrade. Avoid repeated freeze-thaw cycles.

**Concentration** 50 µg/mL as determined by BCA

**Storage Buffer** 100 mM glycine, 25 mM Tris-HCl, pH 7.3.

## GENE INFORMATION

**Gene Name** CYP2E1 cytochrome P450 family 2 subfamily E member 1 [ Homo sapiens (human) ]

**Official Symbol** CYP2E1

**Synonyms**

CYP2E1; cytochrome P450 family 2 subfamily E member 1; CPE1; CYP2E; P450-J; P450C2E; cytochrome P450 2E1; 4-nitrophenol 2-hydroxylase; CYP1IE1; cytochrome P450, family 2, subfamily E, polypeptide 1; cytochrome P450, subfamily IIE (ethanol-inducible), polypeptide 1; cytochrome P450-J; flavoprotein-linked monooxygenase; microsomal monooxygenase; xenobiotic monooxygenase; EC 1.14.13.n7; EC 1.14.14.1

 Tel: 1-631-559-9269 1-516-512-3133

 Email: [info@creative-biomart.com](mailto:info@creative-biomart.com)  Fax: 1-631-938-8127

 45-1 Ramsey Road, Shirley, NY 11967, USA

**Gene ID** 1571

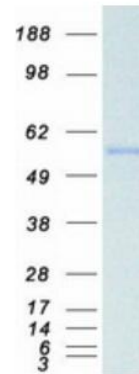
**mRNA Refseq** [NM\\_000773](#)

**Protein Refseq** [NP\\_000764](#)

**MIM** 124040

**UniProt ID** [P05181](#)

**SDS-PAGE**



 Tel: 1-631-559-9269 1-516-512-3133

 Email: [info@creative-biomart.com](mailto:info@creative-biomart.com)  Fax: 1-631-938-8127

 45-1 Ramsey Road, Shirley, NY 11967, USA