

Recombinant Human CYP2U1 Protein, GST-tagged

Cat. No. CYP2U1-2270H **Lot. No.** (See product label)

SPECIFICATION

Product Overview	Human CYP2U1 full-length ORF (AAH12027.1, 1 a.a. - 168 a.a.) recombinant protein with GST-tag at N-terminal.
Species	Human
Source	Wheat Germ
Description	This gene encodes a member of the cytochrome P450 superfamily of enzymes. The cytochrome P450 proteins are monooxygenases which catalyze many reactions involved in drug metabolism and synthesis of cholesterol, steroids and other lipids. This enzyme is a hydroxylase that metabolizes arachidonic acid, docosahexaenoic acid, and other long chain fatty acids. [provided by RefSeq, Jul 2008]
Molecular Mass	45 kDa
AA Sequence	MSSPGPSQPPAEDPPWPARLLRAPLGLLRDPSGGALLLCGLVALLGWSWLRRRR ARGIPPGPTPWPLVGNFGHVLLPPFLRRRSWLSSTRRAAGIDPSVIGPQVLLAHLAR VYGSIFSFFIGHYLVVVLSDFHVSREALVQQAEEVFSRDRPRVPLISIVTKEKELFQE
Applications	Enzyme-linked Immunoabsorbent Assay Western Blot (Recombinant protein) Antibody Production Protein Array
Notes	Best use within three months from the date of receipt of this protein.

 Tel: 1-631-559-9269 1-516-512-3133

 Email: info@creative-biomart.com  Fax: 1-631-938-8127

 45-1 Ramsey Road, Shirley, NY 11967, USA

Storage Store at -80 centigrade. Aliquot to avoid repeated freezing and thawing.

Storage Buffer 50 mM Tris-HCl, 10 mM reduced Glutathione, pH=8.0 in the elution buffer.

GENE INFORMATION

Gene Name CYP2U1 cytochrome P450, family 2, subfamily U, polypeptide 1 [Homo sapiens]

Official Symbol CYP2U1

Synonyms CYP2U1; cytochrome P450, family 2, subfamily U, polypeptide 1; cytochrome P450 2U1; P450TEC;

Gene ID 113612

mRNA Refseq NM_183075

Protein Refseq NP_898898

MIM 610670

UniProt ID Q7Z449

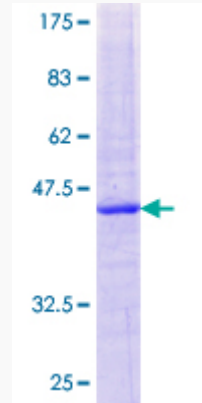
 Tel: 1-631-559-9269 1-516-512-3133

 Email: info@creative-biomart.com  Fax: 1-631-938-8127

 45-1 Ramsey Road, Shirley, NY 11967, USA

Quality Control

Testing:



12.5% SDS-PAGE Stained with Coomassie Blue.

 Tel: 1-631-559-9269 1-516-512-3133

 Email: info@creative-biomart.com  Fax: 1-631-938-8127

 45-1 Ramsey Road, Shirley, NY 11967, USA