

Recombinant Human CYP2U1 protein, GST-tagged

Cat. No. CYP2U1-6744H **Lot. No.** (See product label)

SPECIFICATION

Product Overview	Recombinant Human CYP2U1 protein(1-59 aa), fused with N-terminal GST tag, was expressed in E.coli.
Species	Human
Source	E.coli
ProteinLength	1-59 aa
Form	The purified protein was lyophilized from sterile phosphate-buffered saline (PBS: 58 mM Na ₂ HPO ₄ , 17 mM NaH ₂ PO ₄ , 68 mM NaCl, pH 8.0). Prior to lyophilization, 5% (w/v) trehalose and 5% (w/v) mannitol were incorporated as cryoprotective excipients.
AASequence	MSSPGPSQPPAEDPPWPARLLRAPLGLLLRDPSGGALLLCGLVALLGWSWLRRRR ARGI
Purity	85%, by SDS-PAGE with Coomassie Brilliant Blue staining.
Storage	Store at 2-8°C for 1-2 weeks. Aliquot and store at -20°C to -80°C for up to 3 months, reconstitution with sterile water and addition of an equal volume of glycerol. Avoid repeat freeze-thaw cycles.
Reconstitution	Dissolve the product in 200 µl sterile water to achieve a working concentration of 0.25 g/

 Tel: 1-631-559-9269 1-516-512-3133

 Email: info@creative-biomart.com  Fax: 1-631-938-8127


 45-1 Ramsey Road, Shirley, NY 11967, USA



µl. If experimental compatibility allows, mix the aqueous solution with an equal volume of glycerol (1:1 ratio) after initial reconstitution.

GENE INFORMATION

Gene Name	CYP2U1 cytochrome P450, family 2, subfamily U, polypeptide 1 [Homo sapiens]
Official Symbol	CYP2U1
Synonyms	CYP2U1; cytochrome P450, family 2, subfamily U, polypeptide 1; cytochrome P450 2U1; P450TEC;
Gene ID	113612
mRNA Refseq	NM_183075
Protein Refseq	NP_898898
MIM	610670
UniProt ID	Q7Z449

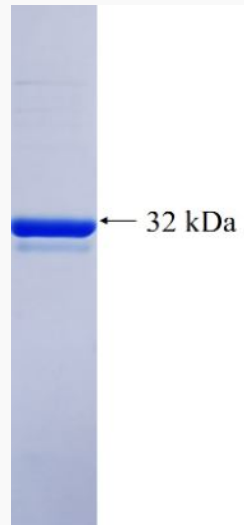
 Tel: 1-631-559-9269 1-516-512-3133

 Email: info@creative-biomart.com  Fax: 1-631-938-8127

 45-1 Ramsey Road, Shirley, NY 11967, USA



SDS-PAGE



Tel: 1-631-559-9269 1-516-512-3133

Email: info@creative-biomart.com Fax: 1-631-938-8127

45-1 Ramsey Road, Shirley, NY 11967, USA