

Recombinant Full Length Human CYP46A1 Protein, C-Flag-tagged

Cat. No. CYP46A1-221HFL **Lot. No.** (See product label)

SPECIFICATION

Product Overview	Recombinant Full Length Human CYP46A1 Protein, fused to Flag-tag at C-terminus, was expressed in Mammalian cells.
Species	Human
Source	Mammalian Cells
Description	<p>This gene encodes a member of the cytochrome P450 superfamily of enzymes. The cytochrome P450 proteins are monooxygenases which catalyze many reactions involved in drug metabolism and synthesis of cholesterol, steroids and other lipids.</p> <p>This endoplasmic reticulum protein is expressed in the brain, where it converts cholesterol to 24S-hydroxycholesterol. While cholesterol cannot pass the blood-brain barrier, 24S-hydroxycholesterol can be secreted in the brain into the circulation to be returned to the liver for catabolism.</p>
Form	25 mM Tris HCl, pH 7.3, 100 mM glycine, 10% glycerol.
Molecular Mass	56.6 kDa
AA Sequence	<p>MSPGLLLLGSAVLLAFGLCCTFVHRARSRYEHIPGPPRPSFLLGHLPCFWKKDEVG GRVLQDVFLDWAKK YGPVVRVNVFHKTSVIVTSPESVKKFLMSTKYKDSKMYRAL QTVFGERLFGQGLVSECNYSRWHKQRRV IDLAFSRSSLVSLMETFNEKAEQLVEIL EAKADGQTPVSMQDMLTYTAMDILAKAAFGMETSMMLGAQKP LSQAVKLMLEGITA SRNTLAKFLPGKRKQLREVRESIRFLRQVGRDWVQRRREALKRGEEVPADILTQIL K</p>

 Tel: 1-631-559-9269 1-516-512-3133

 Email: info@creative-biomart.com  Fax: 1-631-938-8127

 45-1 Ramsey Road, Shirley, NY 11967, USA

AEEGAQDDEGLLDNFVTFFFIAGHETSANHLAFTVMELSRQPEIVARLQAEVDEVIGS
 KRYLDFEDLGRL QYLSQVLKESLRLYPPAWGTFRLLLEEETLIDGVRVPGNTPLLST
 YVMGRMDTYFEDPLTFNPDRFGPGA PKPRFTYFPFSLGHRSCIGQQFAQMEVKVV
 MAKLLQRLEFRLVPGQRFGQLQEATLKPLDPVLCTLRPRG
 WQPAPPPPPCTRTRPLEQKLISEEDLAANDILDYKDDDDKV

Purity > 80% as determined by SDS-PAGE and Coomassie blue staining.

Stability Stable for 12 months from the date of receipt of the product under proper storage and handling conditions. Avoid repeated freeze-thaw cycles.

Storage Store at -80 centigrade.

Concentration >50 ug/mL as determined by microplate BCA method.

Preparation Recombinant protein was captured through anti-DDK affinity column followed by conventional chromatography steps.

Protein Families Druggable Genome, P450

Protein Pathways Primary bile acid biosynthesis

Full Length Full L.

GENE INFORMATION

Gene Name CYP46A1 cytochrome P450 family 46 subfamily A member 1 [Homo sapiens (human)]

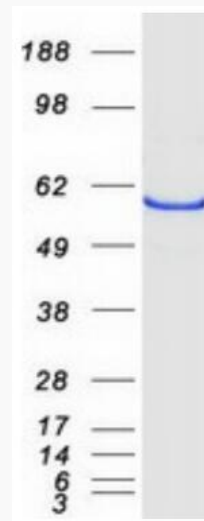
Official Symbol CYP46A1

 Tel: 1-631-559-9269 1-516-512-3133

 Email: info@creative-biomart.com  Fax: 1-631-938-8127

 45-1 Ramsey Road, Shirley, NY 11967, USA

Synonyms	CP46; CYP46
Gene ID	10858
mRNA Refseq	NM_006668.2
Protein Refseq	NP_006659.1
MIM	604087
UniProt ID	Q9Y6A2



Coomassie blue staining of purified CYP46A1 protein.

Tel: 1-631-559-9269 1-516-512-3133

Email: info@creative-biomart.com Fax: 1-631-938-8127

45-1 Ramsey Road, Shirley, NY 11967, USA