

## Recombinant Human CYP4F3 Protein, GST-tagged

Cat. No. CYP4F3-2285H Lot. No. (See product label)

### SPECIFICATION

<b>Product Overview</b>	Human CYP4F3 partial ORF ( NP_000887, 100 a.a. - 198 a.a.) recombinant protein with GST-tag at N-terminal.
<b>Species</b>	Human
<b>Source</b>	Wheat Germ
<b>Description</b>	This gene, CYP4F3, encodes a member of the cytochrome P450 superfamily of enzymes. The cytochrome P450 proteins are monooxygenases which catalyze many reactions involved in drug metabolism and synthesis of cholesterol, steroids and other lipids. This protein localizes to the endoplasmic reticulum. The enzyme starts the process of inactivating and degrading leukotriene B4, a potent mediator of inflammation. This gene is part of a cluster of cytochrome P450 genes on chromosome 19. Another member of this family, CYP4F8, is approximately 18 kb away. Three transcript variants encoding two different isoforms have been found for this gene. [provided by RefSeq, Nov 2010]
<b>Molecular Mass</b>	36.63 kDa
<b>AA Sequence</b>	RIFHPTYIKPVLFPAAIIVPKDKVFYSFLKPWLGDGLLLSAGEKWSRHRRLTPAFHF NILKPYMKIFNESVNIMHAKWQLLASEGSARLDMFEHISLM
<b>Applications</b>	Enzyme-linked Immunoabsorbent Assay Western Blot (Recombinant protein) Antibody Production

 Tel: 1-631-559-9269 1-516-512-3133

 Email: [info@creative-biomart.com](mailto:info@creative-biomart.com)  Fax: 1-631-938-8127

 45-1 Ramsey Road, Shirley, NY 11967, USA

Protein Array

<b>Notes</b>	Best use within three months from the date of receipt of this protein.
<b>Storage</b>	Store at -80 centigrade. Aliquot to avoid repeated freezing and thawing.
<b>Storage Buffer</b>	50 mM Tris-HCl, 10 mM reduced Glutathione, pH=8.0 in the elution buffer.

## GENE INFORMATION

<b>Gene Name</b>	CYP4F3 cytochrome P450, family 4, subfamily F, polypeptide 3 [ Homo sapiens ]
<b>Official Symbol</b>	CYP4F3
<b>Synonyms</b>	CYP4F3; cytochrome P450, family 4, subfamily F, polypeptide 3; cytochrome P450, subfamily IVF, polypeptide 3 (leukotriene B4 omega hydroxylase) , LTB4H; leukotriene-B(4) omega-hydroxylase 2; CYP4F; CYP4F3; cytochrome P-450; cytochrome P450 4F3; cytochrome P450-LTB-omega; leukotriene-B4 20-monooxygenase; leukotriene B4 omega hydroxylase; leukotriene-B(4) 20-monooxygenase 2; cytochrome P450, subfamily IVF, polypeptide 3 (leukotriene B4 omega hydroxylase); CPF3; LTB4H;
<b>Gene ID</b>	4051
<b>mRNA Refseq</b>	NM_000896
<b>Protein Refseq</b>	NP_000887
<b>MIM</b>	601270
<b>UniProt ID</b>	Q08477

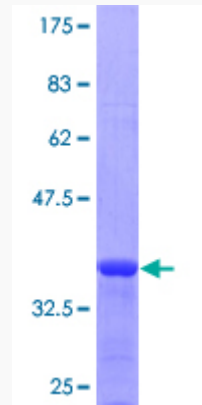
 Tel: 1-631-559-9269 1-516-512-3133

 Email: [info@creative-biomart.com](mailto:info@creative-biomart.com)  Fax: 1-631-938-8127

 45-1 Ramsey Road, Shirley, NY 11967, USA

**Quality Control**

**Testing:**



12.5% SDS-PAGE Stained with Coomassie Blue.

 Tel: 1-631-559-9269 1-516-512-3133

 Email: [info@creative-biomart.com](mailto:info@creative-biomart.com)  Fax: 1-631-938-8127

 45-1 Ramsey Road, Shirley, NY 11967, USA