

Recombinant Human CYP4Z1 Protein, GST-tagged

Cat. No. CYP4Z1-2289H Lot. No. (See product label)

SPECIFICATION

Product Overview Human CYP4Z1 full-length ORF (NP_835235.1, 1 a.a. - 505 a.a.) recombinant protein with GST-tag at N-terminal.

Species Human

Source Wheat Germ

Description This gene encodes a member of the cytochrome P450 superfamily of enzymes. The cytochrome P450 proteins are monooxygenases which catalyze many reactions involved in drug metabolism and synthesis of cholesterol, steroids and other lipids. This gene is part of a cluster of cytochrome P450 genes on chromosome 1p33. [provided by RefSeq, Jul 2008]

Molecular Mass 85.5 kDa

AA Sequence

```
MEPSWLQELMAHPFLLLILLCMSLLLFQVIRLYQRRRWIRALHLFPAPPAHWFYGH
KEFYVPKFEFEVYHKLMEKYPCAVPLWVGPFMTFFSVHDPDYAKILLKRQDPKSAVS
HKILES WVGRGLVTLDGSKWKKHRQIVKPGFNISILKIFITMMSESVRMMMLNKWEEHI
AQNSRLELFQHVSLMTLDSIMKCAFESHQGSIQLDSTLDSYLKAVFNLSKISNQRMN
FLHHNDLVFKFSSQGQIFSKFNQELHQFTEKVIQDRKESLKDCLKQDTTQKRRWDFL
DILLSAKSENTKDFSEADLQAEVKTFFMAGHDTTSSAISWILYCLAKYPEHQQRCD
EIRELLGDGSSITWEHLSQMPYTTMCIKECLRLYAPVVNISRLLDKPITFPDGRSLPAG
ITVFINIWALHHNPYFWEDPQVFNPLRFSRENSKIHYPYAFIPFSAGLRNCIGQHFAIIE
CKVAVALTLLRFKLAPDHSRPPQPVRQVVLKSKNGIHVFVAKKVC
```

 Tel: 1-631-559-9269 1-516-512-3133

 Email: info@creative-biomart.com  Fax: 1-631-938-8127

 45-1 Ramsey Road, Shirley, NY 11967, USA

Applications	Enzyme-linked Immunoabsorbent Assay Western Blot (Recombinant protein) Antibody Production Protein Array
Notes	Best use within three months from the date of receipt of this protein.
Storage	Store at -80 centigrade. Aliquot to avoid repeated freezing and thawing.
Storage Buffer	50 mM Tris-HCl, 10 mM reduced Glutathione, pH=8.0 in the elution buffer.

GENE INFORMATION

Gene Name	CYP4Z1 cytochrome P450, family 4, subfamily Z, polypeptide 1 [Homo sapiens]
Official Symbol	CYP4Z1
Synonyms	CYP4Z1; cytochrome P450, family 4, subfamily Z, polypeptide 1; cytochrome P450 4Z1; CYP4A20; CYP4Z1;
Gene ID	199974
mRNA Refseq	NM_178134
Protein Refseq	NP_835235
UniProt ID	Q86W10

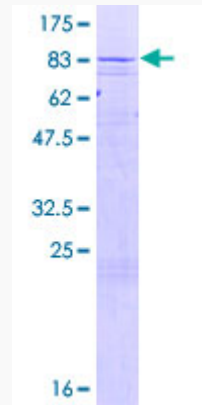
 Tel: 1-631-559-9269 1-516-512-3133

 Email: info@creative-biomart.com  Fax: 1-631-938-8127

 45-1 Ramsey Road, Shirley, NY 11967, USA

Quality Control

Testing:



12.5% SDS-PAGE Stained with Coomassie Blue.

 Tel: 1-631-559-9269 1-516-512-3133

 Email: info@creative-biomart.com  Fax: 1-631-938-8127

 45-1 Ramsey Road, Shirley, NY 11967, USA