

## Recombinant Human CYP7A1 Protein, GST-tagged

Cat. No. CYP7A1-2291H Lot. No. (See product label)

### SPECIFICATION

<b>Product Overview</b>	Human CYP7A1 partial ORF (NP_000771.2, 179 a.a. - 277 a.a.) recombinant protein with GST tag at N-terminal.
<b>Species</b>	Human
<b>Source</b>	Wheat Germ
<b>ProteinLength</b>	179-277 a.a.
<b>Description</b>	<p>This gene encodes a member of the cytochrome P450 superfamily of enzymes. The cytochrome P450 proteins are monooxygenases which catalyze many reactions involved in drug metabolism and synthesis of cholesterol, steroids and other lipids. This endoplasmic reticulum membrane protein catalyzes the first reaction in the cholesterol catabolic pathway in the liver, which converts cholesterol to bile acids. This reaction is the rate limiting step and the major site of regulation of bile acid synthesis, which is the primary mechanism for the removal of cholesterol from the body. Polymorphisms in the promoter of this gene are associated with defects in bile acid synthesis. [provided by RefSeq, Feb 2010]</p>
<b>Molecular Mass</b>	36.63 kDa
<b>AA Sequence</b>	MFEAGYLTIFGRDLTRRDTQKAHILNNDNFKQFDKVFALVAGLPIHMFRTAHNAR EKLAESLRHENLQKRESISELISLRMFLNDTLSTFDDLEKAK
<b>Applications</b>	Enzyme-linked Immunoabsorbent Assay

 Tel: 1-631-559-9269 1-516-512-3133

 Email: [info@creative-biomart.com](mailto:info@creative-biomart.com)  Fax: 1-631-938-8127

 45-1 Ramsey Road, Shirley, NY 11967, USA

Western Blot (Recombinant protein)  
 Antibody Production  
 Protein Array

**Notes** Best use within three months from the date of receipt of this protein.

**Storage** Store at -80 centigrade. Aliquot to avoid repeated freezing and thawing.

**Storage Buffer** 50 mM Tris-HCl, 10 mM reduced Glutathione, pH=8.0 in the elution buffer.

## GENE INFORMATION

**Gene Name** [CYP7A1 cytochrome P450, family 7, subfamily A, polypeptide 1 \[ Homo sapiens \]](#)

**Official Symbol** [CYP7A1](#)

**Synonyms** CYP7A1; cytochrome P450, family 7, subfamily A, polypeptide 1; CYP7, cytochrome P450, subfamily VIIA (cholesterol 7 alpha monooxygenase), polypeptide 1; cholesterol 7-alpha-monooxygenase; cholesterol 7 alpha monooxygenase; cytochrome P450 7A1; cholesterol 7-alpha-hydroxylase; cytochrome P450, subfamily VIIA polypeptide 1; CP7A; CYP7; CYPVII; MGC126826; MGC138389;

**Gene ID** [1581](#)

**mRNA Refseq** [NM\\_000780](#)

**Protein Refseq** [NP\\_000771](#)

**MIM** [118455](#)

**UniProt ID** [P22680](#)

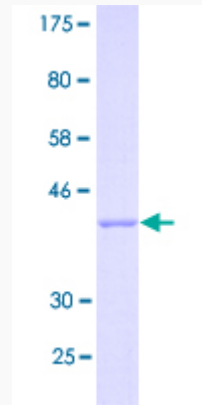
 Tel: 1-631-559-9269 1-516-512-3133

 Email: [info@creative-biomart.com](mailto:info@creative-biomart.com)  Fax: 1-631-938-8127

 45-1 Ramsey Road, Shirley, NY 11967, USA

**Quality Control**

**Testing:**



12.5% SDS-PAGE Stained with Coomassie Blue

 Tel: 1-631-559-9269 1-516-512-3133

 Email: [info@creative-biomart.com](mailto:info@creative-biomart.com)  Fax: 1-631-938-8127

 45-1 Ramsey Road, Shirley, NY 11967, USA