

## Recombinant Human CYP7A1 Protein, Myc/DDK-tagged

Cat. No. CYP7A1-2425H Lot. No. (See product label)

### SPECIFICATION

<b>Product Overview</b>	Recombinant protein of human cytochrome P450, family 7, subfamily A, polypeptide 1 (CYP7A1) with a C-Myc/DDK tag was expressed in HEK293T.
<b>Species</b>	Human
<b>Source</b>	HEK293
<b>Description</b>	<p>This gene encodes a member of the cytochrome P450 superfamily of enzymes. The cytochrome P450 proteins are monooxygenases which catalyze many reactions involved in drug metabolism and synthesis of cholesterol, steroids and other lipids. This endoplasmic reticulum membrane protein catalyzes the first reaction in the cholesterol catabolic pathway in the liver, which converts cholesterol to bile acids. This reaction is the rate limiting step and the major site of regulation of bile acid synthesis, which is the primary mechanism for the removal of cholesterol from the body. Polymorphisms in the promoter of this gene are associated with defects in bile acid synthesis.</p>
<b>Molecular Mass</b>	57.5 kDa
<b>Purity</b>	> 80% as determined by SDS-PAGE and Coomassie blue staining
<b>Stability</b>	Stable for 12 months from the date of receipt of the product under proper storage and handling conditions. Avoid repeated freeze-thaw cycles.
<b>Storage</b>	Store at -80 centigrade.

 Tel: 1-631-559-9269 1-516-512-3133

 Email: [info@creative-biomart.com](mailto:info@creative-biomart.com)  Fax: 1-631-938-8127

 45-1 Ramsey Road, Shirley, NY 11967, USA

**Concentration** >50 µg/mL as determined by microplate BCA method

**Storage Buffer** 25 mM Tris.HCl, pH 7.3, 100 mM glycine, 10% glycerol

## GENE INFORMATION

**Gene Name** CYP7A1 cytochrome P450 family 7 subfamily A member 1 [ Homo sapiens (human) ]

**Official Symbol** CYP7A1

**Synonyms**

CYP7A1; cytochrome P450 family 7 subfamily A member 1; CP7A; CYP7; CYPVII; cytochrome P450 7A1; 24-hydroxycholesterol 7-alpha-hydroxylase; cholesterol 7-alpha-hydroxylase; cholesterol 7-alpha-monooxygenase; cholesterol 7alpha-hydroxylase; cytochrome P450, family 7, subfamily A, polypeptide 1; cytochrome P450, subfamily VIIA polypeptide 1; EC 1.14.14.23; EC 1.14.14.26

**Gene ID** 1581

**mRNA Refseq** NM\_000780

**Protein Refseq** NP\_000771

**MIM** 118455

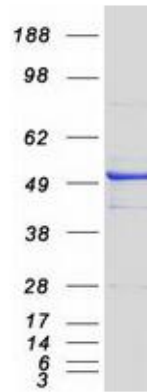
**UniProt ID** P22680

 Tel: 1-631-559-9269 1-516-512-3133

 Email: [info@creative-biomart.com](mailto:info@creative-biomart.com)  Fax: 1-631-938-8127

 45-1 Ramsey Road, Shirley, NY 11967, USA

SDS-Page



 Tel: 1-631-559-9269 1-516-512-3133

 Email: [info@creative-biomart.com](mailto:info@creative-biomart.com)  Fax: 1-631-938-8127

 45-1 Ramsey Road, Shirley, NY 11967, USA