

Recombinant Full Length Human CYP7A1 Protein, C-Flag-tagged

Cat. No. CYP7A1-552HFL **Lot. No.** (See product label)

SPECIFICATION

Product Overview	Recombinant Full Length Human CYP7A1 Protein, fused to Flag-tag at C-terminus, was expressed in Mammalian cells.
Species	Human
Source	Mammalian Cells
Description	<p>This gene encodes a member of the cytochrome P450 superfamily of enzymes. The cytochrome P450 proteins are monooxygenases which catalyze many reactions involved in drug metabolism and synthesis of cholesterol, steroids and other lipids. This endoplasmic reticulum membrane protein catalyzes the first reaction in the cholesterol catabolic pathway in the liver, which converts cholesterol to bile acids. This reaction is the rate limiting step and the major site of regulation of bile acid synthesis, which is the primary mechanism for the removal of cholesterol from the body. Polymorphisms in the promoter of this gene are associated with defects in bile acid synthesis.</p>
Form	25 mM Tris HCl, pH 7.3, 100 mM glycine, 10% glycerol.
Molecular Mass	57.5 kDa
AA Sequence	<p>MMTTSLIWGIAIAACCCLWLILGIRRRQTGEPPLENGLIPYLGICALQFGANPLEFLRAN QRKHGHVFTCK LMGKYVHFITNPLSYHKVLCHGKYFDWKKFHFATSAKAFGHRSID PMDGNTTENINDTFIKTLQGHALNS LTESMMENLQRIMRPPVSSNSKTAAWVTEGM</p>

 Tel: 1-631-559-9269 1-516-512-3133

 Email: info@creative-biomart.com  Fax: 1-631-938-8127

 45-1 Ramsey Road, Shirley, NY 11967, USA

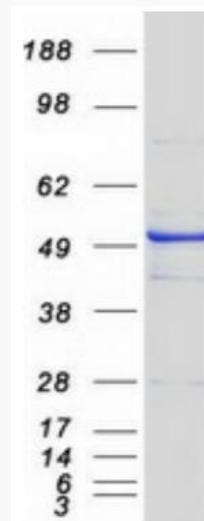
YSFCYRVMFEAGYLTIFGRDLTRRDTQKAHILNLDNFK QFDKVPALVAGLPIHMF
 RTAHNAREKLAESLRHENLQKRESISELISLRMFLNDTLSTFDDLEKAKTHL VVLWA
 SQANTIPATFWSLFQMIRNPEAMKAATEEVKRTLENAGQKVSLEGNPICLSQAELND
 LPVLDSII KESLRLSSASLNIRTAKEFTLHLEDGSGYNIRKDDIALLYPQLMHLDP EIYP
 DPLTFKYDRYLDENGKTK TTFYCNGCLKKYMPFGSGATICPGRLFAIHEIKQFLIL
 MLSYFELELIEGQAKCPPLDQSRAGLGILP
 PLNDIEFKYKFKHLTRTRPLEQKLISEEDLAANDILDYKDDDDKV

Purity	> 80% as determined by SDS-PAGE and Coomassie blue staining.
Stability	Stable for 12 months from the date of receipt of the product under proper storage and handling conditions. Avoid repeated freeze-thaw cycles.
Storage	Store at -80 centigrade.
Concentration	>50 ug/mL as determined by microplate BCA method.
Preparation	Recombinant protein was captured through anti-DDK affinity column followed by conventional chromatography steps.
Protein Families	Druggable Genome, ES Cell Differentiation/IPS, P450, Transmembrane
Protein Pathways	Metabolic pathways, PPAR signaling pathway, Primary bile acid biosynthesis
Full Length	Full L.

GENE INFORMATION

Gene Name	CYP7A1 cytochrome P450 family 7 subfamily A member 1 [Homo sapiens (human)]
Official Symbol	CYP7A1

Synonyms	CP7A; CYP7; CYPVII
Gene ID	1581
mRNA Refseq	NM_000780.4
Protein Refseq	NP_000771.2
MIM	118455
UniProt ID	P22680



Coomassie blue staining of purified CYP7A1 protein.

 Tel: 1-631-559-9269 1-516-512-3133

 Email: info@creative-biomart.com  Fax: 1-631-938-8127

 45-1 Ramsey Road, Shirley, NY 11967, USA