

## Recombinant Human CYP7A1 protein, His-tagged

Cat. No. CYP7A1-6743H Lot. No. (See product label)

### SPECIFICATION

<b>Product Overview</b>	Recombinant Human CYP7A1 protein(P22680)(1-504aa), fused with N-terminal His tag, was expressed in E.coli.
<b>Species</b>	Human
<b>Source</b>	E.coli
<b>ProteinLength</b>	1-504aa
<b>Form</b>	If the delivery form is liquid, the default storage buffer is Tris/PBS-based buffer, 5%-50% glycerol. If the delivery form is lyophilized powder, the buffer before lyophilization is Tris/PBS-based buffer, 6% Trehalose, pH 8.0.
<b>Molecular Mass</b>	61.7 kDa
<b>Purity</b>	Greater than 85% as determined by SDS-PAGE.
<b>Storage</b>	Store at -20°C/-80°C upon receipt, aliquoting is necessary for mutiple use. Avoid repeated freeze-thaw cycles.
<b>Reconstitution</b>	We recommend that this vial be briefly centrifuged prior to opening to bring the contents to the bottom. Please reconstitute protein in deionized sterile water to a concentration of 0.1-1.0 mg/mL. We recommend to add 5-50% of glycerol (final concentration) and aliquot for long-term storage at -20°C/-80°C.

 Tel: 1-631-559-9269 1-516-512-3133

 Email: [info@creative-biomart.com](mailto:info@creative-biomart.com)  Fax: 1-631-938-8127

 45-1 Ramsey Road, Shirley, NY 11967, USA

**AA Sequence**

MMTTSLIWGIAIAACCCLWLILGIRRRQTGEPPELNLIPYLGICALQFGANPLEFLRAN  
 QRKHGHVFTCKLMGKYVHFITNPLSYHKVLCHGKYFDWKKFHFATSAKAFGHRSID  
 PMDGNTTENINDTFIKTLQGHALNSLTESMMENLQRIMRPPVSSNSKTAAWVTEGM  
 YSFCYRVMFEAGYLTIFGRDLTRRDTQKAHILNLDNFKQFDKVFALVAGLPIHMFR  
 TAHNAREKLAESLRHENLQKRESISELISLRMFLNDTLSTFDDLEKAKTHLVVLWASQ  
 ANTIPATFWSLFQMIRNPEAMKAATEEVKRTLENAGQKVSLEGNPICLSQAELNDLP  
 VLDSIIKESLRLSSASLNIRTAKEDFTLHLEDGSYNIRKDDIHALYPQLMHLDP E I Y P D P L  
 TFKYDRYLDENGKTKTTFYCNGLKLKYYMPFGSGATICPGRLF A I H E I K Q F L I L M L S Y  
 FELEIEGQAKCPPLDQSRAGLGILPPLNDIEFKYKFKHL

## GENE INFORMATION

**Gene Name** [CYP7A1 cytochrome P450, family 7, subfamily A, polypeptide 1 \[ Homo sapiens \]](#)

**Official Symbol** [CYP7A1](#)

**Synonyms** CYP7A1; cytochrome P450, family 7, subfamily A, polypeptide 1; CYP7, cytochrome P450, subfamily VIIA (cholesterol 7 alpha monooxygenase), polypeptide 1; cholesterol 7-alpha-monooxygenase; cholesterol 7 alpha monooxygenase; cytochrome P450 7A1; cholesterol 7-alpha-hydroxylase; cytochrome P450, subfamily VIIA polypeptide 1; CP7A; CYP7; CYPVII; MGC126826; MGC138389;

**Gene ID** [1581](#)

**mRNA Refseq** [NM\\_000780](#)

**Protein Refseq** [NP\\_000771](#)

**MIM** [118455](#)

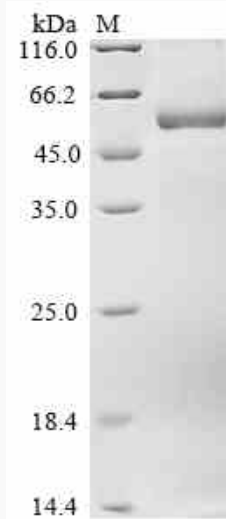
**UniProt ID** [P22680](#)

 Tel: 1-631-559-9269 1-516-512-3133

 Email: [info@creative-biomart.com](mailto:info@creative-biomart.com)  Fax: 1-631-938-8127

 45-1 Ramsey Road, Shirley, NY 11967, USA

**SDS-PAGE**



 Tel: 1-631-559-9269 1-516-512-3133

 Email: [info@creative-biomart.com](mailto:info@creative-biomart.com)  Fax: 1-631-938-8127

 45-1 Ramsey Road, Shirley, NY 11967, USA