

Recombinant Human CYP7B1 Protein, GST-tagged

Cat. No. CYP7B1-2292H **Lot. No.** (See product label)

SPECIFICATION

Product Overview	Human CYP7B1 full-length ORF (NP_004811.1, 1 a.a. - 506 a.a.) recombinant protein with GST-tag at N-terminal.
Species	Human
Source	Wheat Germ
Description	<p>This gene encodes a member of the cytochrome P450 superfamily of enzymes. The cytochrome P450 proteins are monooxygenases which catalyze many reactions involved in drug metabolism and synthesis of cholesterol, steroids and other lipids. This endoplasmic reticulum membrane protein catalyzes the first reaction in the cholesterol catabolic pathway of extrahepatic tissues, which converts cholesterol to bile acids. This enzyme likely plays a minor role in total bile acid synthesis, but may also be involved in the development of atherosclerosis, neurosteroid metabolism and sex hormone synthesis. Mutations in this gene have been associated with hereditary spastic paraplegia (SPG5 or HSP), an autosomal recessive disorder. [provided by RefSeq, Apr 2016]</p>
Molecular Mass	84.7 kDa
AA Sequence	<p>MAGEVSAATGRFSLERLGLPGLALAAALLLALCLLVRRTRRPGEPLIKGWLPYLG VVLNLRKDPLRFMKTLQKQHGDTFTVLLGGKYITFILDPFQYQLVIKNHKQLSFRVFS NKLLEKAFSISQLQKNHDMNDELHLCYQFLQGKSLDILLESMMQNLKQVFEPQLLKT TSWDTAELYPCSSIIIFEITFTTIYGKIVICDNNKFISELRDDFLKFDDKFAYLVSNIP</p>

 Tel: 1-631-559-9269 1-516-512-3133

 Email: info@creative-biomart.com  Fax: 1-631-938-8127

 45-1 Ramsey Road, Shirley, NY 11967, USA

LLGNVKSIREKIIKCFSSSEKLAKMQGWSEVFQSRQDVLEKYYVHEDLEIGAHHLGFL
 WASVANTIPTMFWAMYLLRRHPEAMAAVRDEIDRLLQSTGQKKGSGFPIHLTREQL
 DSLICLESSIFEALRLSSYSTTIRFVEEDLTLSSSETGDYCVRKGDVAIFPPVLHGDPEI
 FEAPPEFRYDRFIEDGKKKTTFFKRGKCLKCYLMPFGTGTSTKCPGRFFALMEIKQLL
 VILLYFDLEIIDDKPIGLNYSRLLFGIQYPDSDVLFYRYKVKS

Applications
 Enzyme-linked Immunoabsorbent Assay
 Western Blot (Recombinant protein)
 Antibody Production
 Protein Array

Notes Best use within three months from the date of receipt of this protein.

Storage Store at -80 centigrade. Aliquot to avoid repeated freezing and thawing.

Storage Buffer 50 mM Tris-HCl, 10 mM reduced Glutathione, pH=8.0 in the elution buffer.

GENE INFORMATION

Gene Name [CYP7B1 cytochrome P450, family 7, subfamily B, polypeptide 1 \[Homo sapiens \]](#)

Official Symbol [CYP7B1](#)

Synonyms CYP7B1; cytochrome P450, family 7, subfamily B, polypeptide 1; cytochrome P450, subfamily VIIB (oxysterol 7 alpha hydroxylase), polypeptide 1 , spastic paraplegia 5A (autosomal recessive) , SPG5A; 25-hydroxycholesterol 7-alpha-hydroxylase; cytochrome P450 7B1; oxysterol 7alpha-hydroxylase; oxysterol 7-alpha-hydroxylase; cytochrome P450, subfamily VIIB (oxysterol 7 alpha-hydroxylase), polypeptide 1; CP7B; CBAS3; SPG5A;

Gene ID [9420](#)

 Tel: 1-631-559-9269 1-516-512-3133

 Email: info@creative-biomart.com  Fax: 1-631-938-8127

 45-1 Ramsey Road, Shirley, NY 11967, USA

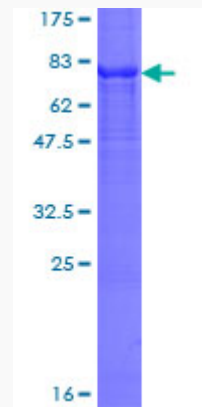
mRNA Refseq [NM_004820](#)

Protein Refseq [NP_004811](#)

MIM [603711](#)

UniProt ID [O75881](#)

**Quality Control
Testing:**



12.5% SDS-PAGE Stained with Coomassie Blue.

 Tel: 1-631-559-9269 1-516-512-3133

 Email: info@creative-biomart.com  Fax: 1-631-938-8127

 45-1 Ramsey Road, Shirley, NY 11967, USA