

# Recombinant Human CYSLTR1 Full Length Transmembrane protein, His-tagged

Cat. No. CYSLTR1-1535H Lot. No. (See product label)

## SPECIFICATION

<b>Product Overview</b>	Recombinant Human CYSLTR1 protein(Q9Y271)(1-337aa), fused to N-terminal His tag, was expressed in E. coli.
<b>Species</b>	Human
<b>Source</b>	E.coli
<b>ProteinLength</b>	1-337aa
<b>Form</b>	If the delivery form is liquid, the default storage buffer is Tris/PBS-based buffer, 5%-50% glycerol. If the delivery form is lyophilized powder, the buffer before lyophilization is Tris/PBS-based buffer, 6% Trehalose, pH 8.0.
<b>Molecular Mass</b>	44.6 kDa
<b>AA Sequence</b>	MDETGNLTVSSATCHDTIDDFRNQVYSTLYSMISVVGFFGNGFVLYVLIKTYHKKSAF QVYMINLAVADLLCVCTLPLRVVYYYVHKGIWLFGLCRLSTYALYNLYCSIFFMTA MSFFRCIAIVFPVQNINLVTQKKARFVCVGIWIFVILTSSPFLMAKPQKDEKNNTKCFE PPQDNQTKNHVVLVHYVSLFVGFIIIPFVIIVCYTMILLLKKSMMKKNLSSHKKAIGMIM VVTA AFLVSFMPYHIQRTIHLHFLHNETKPCDSVLRMQKSVVITLSLAASNCCFDPLL YFFSGGNFRKRLSTFRKHSLSSVTYVPRKKASLPEKGEEICKV
<b>Purity</b>	Greater than 85% as determined by SDS-PAGE.

 Tel: 1-631-559-9269 1-516-512-3133

 Email: [info@creative-biomart.com](mailto:info@creative-biomart.com)  Fax: 1-631-938-8127

 45-1 Ramsey Road, Shirley, NY 11967, USA

**Storage** Store at -20°C/-80°C upon receipt, aliquoting is necessary for mutiple use. Avoid repeated freeze-thaw cycles.

**Reconstitution** Please reconstitute protein in deionized sterile water to a concentration of 0.1-1.0 mg/mL. We recommend to add 5-50% of glycerol (final concentration) and aliquot for long-term storage at -20°C/-80°C. Our default final concentration of glycerol is 50%.

## GENE INFORMATION

**Gene Name** CYSLTR1 cysteinyl leukotriene receptor 1 [ Homo sapiens ]

**Official Symbol** CYSLTR1

**Synonyms** CYSLTR1; cysteinyl leukotriene receptor 1; CysLT(1); CysLT1; CYSLT1R; LTD4 receptor; G-protein coupled receptor HG55; cysteinyl leukotriene D4 receptor; HG55; CYSLT1; CYSLTR; HMTMF81; MGC46139;

**Gene ID** 10800

**mRNA Refseq** NM\_006639

**Protein Refseq** NP\_006630

**MIM** 300201

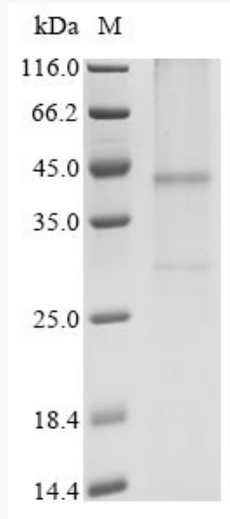
**UniProt ID** Q9Y271

 Tel: 1-631-559-9269 1-516-512-3133

 Email: [info@creative-biomart.com](mailto:info@creative-biomart.com)  Fax: 1-631-938-8127

 45-1 Ramsey Road, Shirley, NY 11967, USA

**SDS-PAGE**



 Tel: 1-631-559-9269 1-516-512-3133

 Email: [info@creative-biomart.com](mailto:info@creative-biomart.com)  Fax: 1-631-938-8127

 45-1 Ramsey Road, Shirley, NY 11967, USA