

Recombinant Human CYTL1 Protein, Myc/DDK-tagged, C13 and N15-labeled

Cat. No. CYTL1-1442H **Lot. No.** (See product label)

SPECIFICATION

Product Overview	CYTL1 MS Standard C13 and N15-labeled recombinant protein (NP_061129) with a C-terminal MYC/DDK tag, was expressed in HEK293 cells.
Species	Human
Source	HEK293
Description	C17 is a cytokine-like protein specifically expressed in bone marrow and cord blood mononuclear cells that bear the CD34 surface marker.
Molecular Mass	15.6 kDa
AA Sequence	MRTPGPLPVLLLLLAGAAPARPTPPTCYSRMRALSQEITRDFNLLQVSEPSEPCVRY LPRLYLDIHNVCVLDKLRDFVASPPCWKVAQVDSLKDKARKLYTIMNSFCRRDLVFL LDDCNAL EYPIPVTTVLPDRQRTRTRPLEQKLISEEDLAANDILDYKDDDDKV
Purity	> 80% as determined by SDS-PAGE and Coomassie blue staining
Stability	Stable for 3 months from receipt of products under proper storage and handling conditions.
Storage	Store at -80 centigrade. Avoid repeated freeze-thaw cycles.
Concentration	50 µg/mL as determined by BCA

 Tel: 1-631-559-9269 1-516-512-3133

 Email: info@creative-biomart.com  Fax: 1-631-938-8127

 45-1 Ramsey Road, Shirley, NY 11967, USA

Storage Buffer 100 mM glycine, 25 mM Tris-HCl, pH 7.3.

GENE INFORMATION

Gene Name CYTL1 cytokine like 1 [Homo sapiens (human)]

Official Symbol CYTL1

Synonyms CYTL1; cytokine like 1; C17; C4orf4; cytokine-like protein 1; cytokine-like protein C17

Gene ID 54360

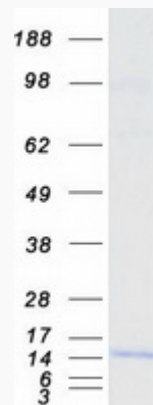
mRNA Refseq NM_018659

Protein Refseq NP_061129

MIM 607930

UniProt ID Q9NRR1

SDS-PAGE



 Tel: 1-631-559-9269 1-516-512-3133

 Email: info@creative-biomart.com  Fax: 1-631-938-8127

 45-1 Ramsey Road, Shirley, NY 11967, USA