

## Active Recombinant Full Length Human CYTL1 Protein, C-Flag-tagged

Cat. No. CYTL1-182HFL Lot. No. (See product label)

### SPECIFICATION

<b>Product Overview</b>	Recombinant Full Length Human CYTL1 Protein, fused to Flag-tag at C-terminus, was expressed in Mammalian cells.
<b>Species</b>	Human
<b>Source</b>	Mammalian Cells
<b>Description</b>	C17 is a cytokine-like protein specifically expressed in bone marrow and cord blood mononuclear cells that bear the CD34 surface marker.
<b>Form</b>	25 mM Tris HCl, pH 7.3, 100 mM glycine, 10% glycerol.
<b>Bio-activity</b>	Cell treatment
<b>Molecular Mass</b>	15.4 kDa
<b>AA Sequence</b>	MRTPGPLPVLLLLLAGAPAARPTPTPCYSRMRALSQEITRDFNLLQVSEPEPCVRY LPRLYLDIHNYCV LDKLRDFVASPPCWKVAQVDSLKDKARKLYTIMNSFCRRDLVFL LDDCNAL EYPIPVTTVLPDRQRTRTRPLEQKLISEEDLAANDILDYKDDDDKV
<b>Purity</b>	> 80% as determined by SDS-PAGE and Coomassie blue staining.
<b>Stability</b>	Stable for 12 months from the date of receipt of the product under proper storage and handling conditions. Avoid repeated freeze-thaw cycles.

 Tel: 1-631-559-9269 1-516-512-3133

 Email: [info@creative-biomart.com](mailto:info@creative-biomart.com)  Fax: 1-631-938-8127

 45-1 Ramsey Road, Shirley, NY 11967, USA

<b>Storage</b>	Store at -80 centigrade.
<b>Concentration</b>	>50 ug/mL as determined by microplate BCA method.
<b>Preparation</b>	Recombinant protein was captured through anti-DDK affinity column followed by conventional chromatography steps.
<b>Protein Families</b>	Druggable Genome, Secreted Protein
<b>Full Length</b>	Full L.

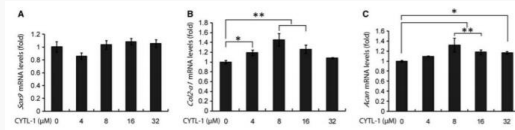
## GENE INFORMATION

<b>Gene Name</b>	CYTL1 cytokine like 1 [ Homo sapiens (human) ]
<b>Official Symbol</b>	CYTL1
<b>Synonyms</b>	C17; C4orf4
<b>Gene ID</b>	54360
<b>mRNA Refseq</b>	NM_018659.3
<b>Protein Refseq</b>	NP_061129.1
<b>MIM</b>	607930
<b>UniProt ID</b>	Q9NRR1

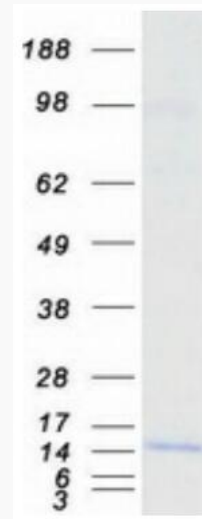
 Tel: 1-631-559-9269 1-516-512-3133

 Email: [info@creative-biomart.com](mailto:info@creative-biomart.com)  Fax: 1-631-938-8127

 45-1 Ramsey Road, Shirley, NY 11967, USA



Regulatory action of CYTL-1 protein on the gene expression of Sox9, Col2-a1, and Acan in cultured chondrocytes. Cells were grown in DMEM-F12 medium containing serially-diluted CYTL-1 protein and used in cDNA template synthesis for qRT-PCR analyses. The house-keeping gene GAPDH served as an internal reference.



Coomassie blue staining of purified CYTL1 protein.