

Recombinant Human CYTL1 Protein, GST-tagged

Cat. No. CYTL1-2307H **Lot. No.** (See product label)

SPECIFICATION

Product Overview	Human CYTL1 full-length ORF (AAH31391, 1 a.a. - 136 a.a.) recombinant protein with GST-tag at N-terminal.
Species	Human
Source	Wheat Germ
Description	C17 is a cytokine-like protein specifically expressed in bone marrow and cord blood mononuclear cells that bear the CD34 (MIM 142230) surface marker (Liu et al., 2000 [PubMed 10857752]).[supplied by OMIM, Mar 2008]
Molecular Mass	40.7 kDa
AA Sequence	MRTPGPLPVLLLLLAGAAPAARPTPPTCYSRMRALSQEITRDFNLLQVSEPSEPCVRY LPRLYLDIHNYCVLDKLRDFVASPPCWKVAQVDSLKDKARKLYTIMNSFCRRDLVFL LDDCNALYPIPVTTALPDRQR
Applications	Enzyme-linked Immunoabsorbent Assay Western Blot (Recombinant protein) Antibody Production Protein Array
Notes	Best use within three months from the date of receipt of this protein.
Storage	Store at -80 centigrade. Aliquot to avoid repeated freezing and thawing.

 Tel: 1-631-559-9269 1-516-512-3133

 Email: info@creative-biomart.com  Fax: 1-631-938-8127

 45-1 Ramsey Road, Shirley, NY 11967, USA

Storage Buffer 50 mM Tris-HCl, 10 mM reduced Glutathione, pH=8.0 in the elution buffer.

GENE INFORMATION

Gene Name CYTL1 cytokine like 1 [Homo sapiens (human)]

Official Symbol CYTL1

Synonyms CYTL1; cytokine like 1; Cytokine Like 1; C4orf4; Cytokine-Like Protein C17; Cytokine-Like Protein 1; Cytokine-Like 1; Protein C17; C17; cytokine-like protein 1; cytokine-like protein C17

Gene ID 54360

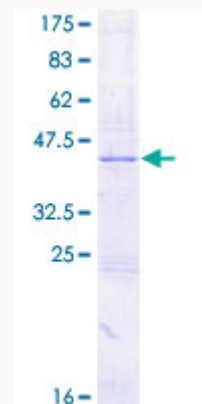
mRNA Refseq NM_018659

Protein Refseq NP_061129

MIM 607930

UniProt ID Q9NRR1

Quality Control Testing:



 Tel: 1-631-559-9269 1-516-512-3133

 Email: info@creative-biomart.com  Fax: 1-631-938-8127

 45-1 Ramsey Road, Shirley, NY 11967, USA



12.5% SDS-PAGE Stained with Coomassie Blue.

 Tel: 1-631-559-9269 1-516-512-3133

 Email: info@creative-biomart.com  Fax: 1-631-938-8127

 45-1 Ramsey Road, Shirley, NY 11967, USA