

## Recombinant Rat Ca2 protein(2-260aa), His-tagged

Cat. No. Ca2-421R Lot. No. (See product label)

### SPECIFICATION

<b>Product Overview</b>	Recombinant Rat Ca2 protein(P27139)(2-260aa), fused with N-terminal His tag, was expressed in E. coli.
<b>Species</b>	Rat
<b>Source</b>	E.coli
<b>ProteinLength</b>	2-260aa
<b>Form</b>	If the delivery form is liquid, the default storage buffer is Tris/PBS-based buffer, 5%-50% glycerol. If the delivery form is lyophilized powder, the buffer before lyophilization is Tris/PBS-based buffer, 6% Trehalose, pH 8.0.
<b>Molecular Mass</b>	31.7 kDa
<b>Purity</b>	Greater than 85% as determined by SDS-PAGE.
<b>Storage</b>	Store at -20°C/-80°C upon receipt, aliquoting is necessary for mutiple use. Avoid repeated freeze-thaw cycles.
<b>Reconstitution</b>	We recommend that this vial be briefly centrifuged prior to opening to bring the contents to the bottom. Please reconstitute protein in deionized sterile water to a concentration of 0.1-1.0 mg/mL. We recommend to add 5-50% of glycerol (final concentration) and aliquot for long-term storage at -20°C/-80°C.

 Tel: 1-631-559-9269 1-516-512-3133

 Email: [info@creative-biomart.com](mailto:info@creative-biomart.com)  Fax: 1-631-938-8127

 45-1 Ramsey Road, Shirley, NY 11967, USA



**AA Sequence**

SHHWGYSKSNPENWHKEFPIANGDRQSPVDIDTGT AQHDPSLQPLLCYDKVASK  
SIVNNGHSFNVEFDDSQDFAVLKEGPLSGSYRLIQFHFHWGSSDGGQSEHTVNKKK  
YAAELHLVHWNTKYGDFGKAVQHPDGLAVLGIFLKIGPASQGLQKITEALHSIKTKGK  
RAAFANFDPCSLLPGNLDYWTYPGSLTTPPLECVTWIVLKEPITVSSEQMSHFRKL  
NFNSEGEAEELMVDNWRPAQPLKNR KIKASFK

**GENE INFORMATION**

**Gene Name** [Ca2 carbonic anhydrase 2 \[ Rattus norvegicus \]](#)

**Official Symbol** [Ca2](#)

**Synonyms** CA2; carbonic anhydrase 2; CA-II; carbonic anhydrase II; carbonate dehydratase II; Car2;

**Gene ID** [54231](#)

**mRNA Refseq** [NM\\_019291](#)

**Protein Refseq** [NP\\_062164](#)

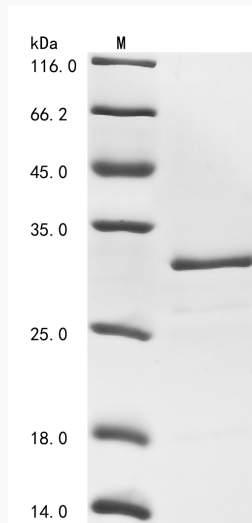
Tel: 1-631-559-9269 1-516-512-3133

Email: [info@creative-biomart.com](mailto:info@creative-biomart.com) Fax: 1-631-938-8127

45-1 Ramsey Road, Shirley, NY 11967, USA



SDS-PAGE



Tel: 1-631-559-9269 1-516-512-3133

Email: [info@creative-biomart.com](mailto:info@creative-biomart.com) Fax: 1-631-938-8127

45-1 Ramsey Road, Shirley, NY 11967, USA