

Recombinant Mouse Cadm1 Protein (Gln48-His388), C-Fc tagged

Cat. No. Cadm1-5942M Lot. No. (See product label)

SPECIFICATION

Product Overview	Recombinant mouse Cadm1 (Gln48-His388) fused with the C-terminal Fc tag was expressed in mammalian cells.
Species	Mouse
Source	Mammalian Cells
ProteinLength	Gln48-His388
Form	Lyophilized powder/frozen liquid
Molecular Mass	62.51 kDa
Purity	> 90 % as determined by SDS-PAGE
Notes	For research use only.
Storage	Use a manual defrost freezer and avoid repeated freeze thaw cycles. Store at 2 to 8 centigrade for one week. Store at -20 to -80 centigrade for twelve months from the date of receipt.
Storage Buffer	Supplied as solution form in PBS or lyophilized from PBS.
Reconstitution	Reconstitute in sterile water for a stock solution.

 Tel: 1-631-559-9269 1-516-512-3133

 Email: info@creative-biomart.com  Fax: 1-631-938-8127

 45-1 Ramsey Road, Shirley, NY 11967, USA

Shipping They are shipped out with dry ice/blue ice unless customers require otherwise.

GENE INFORMATION

Gene Name [Cadm1 cell adhesion molecule 1 \[Mus musculus \(house mouse\) \]](#)

Official Symbol [Cadm1](#)

Synonyms CADM1; cell adhesion molecule 1; NECL-2; TSLC-1; nectin-like 2; nectin-like protein 2; immunosuperfamily protein BI2; synaptic cell adhesion molecule; tumor suppressor in lung cancer 1; immunoglobulin superfamily member 4; immunoglobulin superfamily member 4A; spermatogenic immunoglobulin superfamily; BI2; ST17; Igsf4; Necl2; RA175; Tslc1; Igsf4a; RA175A; RA175B; RA175C; RA175N; SgIGSF; SynCam; AI987920; 2900073G06Rik; 3100001I08Rik;

Gene ID [54725](#)

mRNA Refseq [NM_001025600](#)

Protein Refseq [NP_001020771](#)

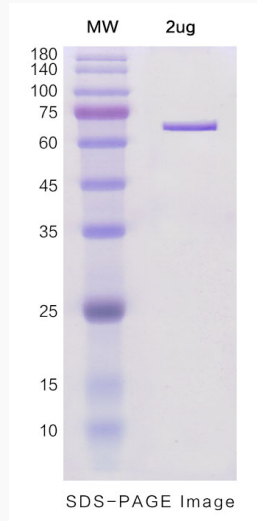
UniProt ID [Q8R5M8](#)

 Tel: 1-631-559-9269 1-516-512-3133

 Email: info@creative-biomart.com  Fax: 1-631-938-8127

 45-1 Ramsey Road, Shirley, NY 11967, USA

SDS-PAGE



 Tel: 1-631-559-9269 1-516-512-3133

 Email: info@creative-biomart.com  Fax: 1-631-938-8127

 45-1 Ramsey Road, Shirley, NY 11967, USA