

## Recombinant Mouse Calcb Protein, His&GST-tagged

**Cat. No.** Calcb-614M    **Lot. No.** (See product label)

### SPECIFICATION

<b>Product Overview</b>	Recombinant Mouse Calcb Protein (Met1-Ala130) with His&GST tag was expressed in E. coli.
<b>Species</b>	Mouse
<b>Source</b>	E.coli
<b>ProteinLength</b>	Met1-Ala130
<b>Description</b>	Predicted to enable calcitonin receptor binding activity. Predicted to be involved in adenylate cyclase-activating G protein-coupled receptor signaling pathway and regulation of cytosolic calcium ion concentration. Predicted to be active in extracellular space. Is expressed in several structures, including alimentary system; cardiovascular system; central nervous system; genitourinary system; and sensory organ. Orthologous to human CALCB (calcitonin related polypeptide beta).
<b>Form</b>	Freeze-dried powder
<b>Molecular Mass</b>	Predicted Molecular Mass: 44.6 kDa; Accurate Molecular Mass: 45 kDa
<b>Purity</b>	> 90%
<b>Applications</b>	Positive Control; Immunogen; SDS-PAGE; WB.
<b>Stability</b>	The thermal stability is described by the loss rate. The loss rate was determined by

 Tel: 1-631-559-9269    1-516-512-3133

 Email: [info@creative-biomart.com](mailto:info@creative-biomart.com)     Fax: 1-631-938-8127

 45-1 Ramsey Road, Shirley, NY 11967, USA



accelerated thermal degradation test, that is, incubate the protein at 37 centigrade for 48h, and no obvious degradation and precipitation were observed. The loss rate is less than 5% within the expiration date under appropriate storage condition.

**Storage**

Avoid repeated freeze/thaw cycles. Store at 2-8 centigrade for one month. Aliquot and store at -80 centigrade for 12 months.

**Storage Buffer**

20mM Tris, 150mM NaCl, pH8.0, containing 1mM EDTA, 1mM DTT, 0.01% SKL, 5% Trehalose and Proclin300.

**Reconstitution**

Reconstitute in 20mM Tris, 150mM NaCl (pH8.0) to a concentration of 0.1-1.0 mg/mL. Do not vortex.

**GENE INFORMATION**

**Gene Name**

Calcb calcitonin-related polypeptide, beta [ *Mus musculus* (house mouse) ]

**Official Symbol**

Calcb

**Synonyms**

CALCB; calcitonin-related polypeptide, beta; calcitonin gene-related peptide 2; CGRP-II; beta-type CGRP; calcitonin gene-related peptide II; CGRP2; Calc2; MGC130530;

**Gene ID**

116903

**mRNA Refseq**

NM\_054084

**Protein Refseq**

NP\_473425

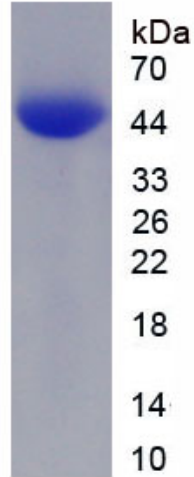
**UniProt ID**

Q99MP3

Tel: 1-631-559-9269 1-516-512-3133

Email: [info@creative-biomart.com](mailto:info@creative-biomart.com) Fax: 1-631-938-8127

45-1 Ramsey Road, Shirley, NY 11967, USA



Tel: 1-631-559-9269 1-516-512-3133

Email: [info@creative-biomart.com](mailto:info@creative-biomart.com) Fax: 1-631-938-8127

45-1 Ramsey Road, Shirley, NY 11967, USA