

## Recombinant Mouse Calr Protein, His-tagged

**Cat. No.** Calr-356M    **Lot. No.** (See product label)

### SPECIFICATION

<b>Product Overview</b>	Recombinant Mouse Calr Protein (Pro19-Leu416) with N-His tag was expressed in E. coli.
<b>Species</b>	Mouse
<b>Source</b>	E.coli
<b>ProteinLength</b>	Pro19-Leu416
<b>Description</b>	Enables calcium ion binding activity; carbohydrate binding activity; and mRNA binding activity. Involved in several processes, including cellular senescence; peptide antigen assembly with MHC class I protein complex; and protein stabilization. Acts upstream of or within cortical actin cytoskeleton organization; positive regulation of NIK/NF-kappaB signaling; and regulation of meiotic nuclear division. Located in endoplasmic reticulum; external side of plasma membrane; and extracellular space. Part of MHC class I peptide loading complex. Is expressed in several structures, including central nervous system; extraembryonic component; gut; placenta; and spleen. Used to study congestive heart failure. Human ortholog(s) of this gene implicated in essential thrombocythemia; myelofibrosis; pancreatic ductal adenocarcinoma; sideroblastic anemia; and thrombocytosis. Orthologous to human CALR (calreticulin).
<b>Form</b>	Freeze-dried powder
<b>Molecular Mass</b>	Predicted Molecular Mass: 46.2 kDa

 Tel: 1-631-559-9269    1-516-512-3133

 Email: [info@creative-biomart.com](mailto:info@creative-biomart.com)     Fax: 1-631-938-8127

 45-1 Ramsey Road, Shirley, NY 11967, USA

<b>Purity</b>	> 97%
<b>Applications</b>	Positive Control; Immunogen; SDS-PAGE; WB.
<b>Stability</b>	The thermal stability is described by the loss rate. The loss rate was determined by accelerated thermal degradation test, that is, incubate the protein at 37 centigrade for 48h, and no obvious degradation and precipitation were observed. The loss rate is less than 5% within the expiration date under appropriate storage condition.
<b>Storage</b>	Avoid repeated freeze/thaw cycles. Store at 2-8 centigrade for one month. Aliquot and store at -80 centigrade for 12 months.
<b>Storage Buffer</b>	PBS, pH7.4, containing 0.01% SKL, 1 mM DTT, 5% Trehalose and Proclin300.
<b>Reconstitution</b>	Reconstitute in sterile water to a concentration of 0.1-1.0 mg/mL. Do not vortex.

## GENE INFORMATION

<b>Gene Name</b>	Calr calreticulin [ <i>Mus musculus</i> (house mouse) ]
<b>Official Symbol</b>	Calr
<b>Synonyms</b>	CALR; calreticulin; CRP55; ERp60; HACBP; endoplasmic reticulum resident protein 60; CRT; Calregulin
<b>Gene ID</b>	12317
<b>mRNA Refseq</b>	NM_007591
<b>Protein Refseq</b>	NP_031617

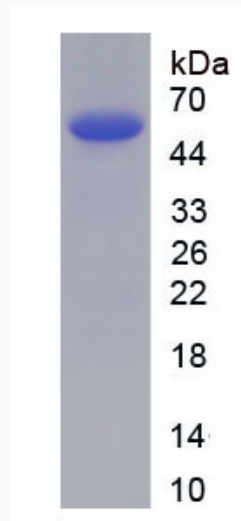
 Tel: 1-631-559-9269 1-516-512-3133

 Email: [info@creative-biomart.com](mailto:info@creative-biomart.com)  Fax: 1-631-938-8127

 45-1 Ramsey Road, Shirley, NY 11967, USA

UniProt ID

P14211



 Tel: 1-631-559-9269 1-516-512-3133

 Email: [info@creative-biomart.com](mailto:info@creative-biomart.com)  Fax: 1-631-938-8127

 45-1 Ramsey Road, Shirley, NY 11967, USA