

Recombinant Rat Calr Protein, His-tagged

Cat. No. Calr-357R Lot. No. (See product label)

SPECIFICATION

Product Overview	Recombinant Rat Calr Protein (Ala72-Lys322) with N-His tag was expressed in E. coli.
Species	Rat
Source	E.coli
ProteinLength	Ala72-Lys322
Description	Enables several functions, including hormone binding activity; metal ion binding activity; and peptide binding activity. Involved in several processes, including cellular response to lithium ion; response to estradiol; and response to testosterone. Located in several cellular components, including acrosomal vesicle; endoplasmic reticulum; and perinuclear region of cytoplasm. Part of protein-containing complex. Biomarker of vitamin B12 deficiency. Human ortholog(s) of this gene implicated in essential thrombocythemia; myelofibrosis; pancreatic ductal adenocarcinoma; sideroblastic anemia; and thrombocytosis. Orthologous to human CALR (calreticulin).
Form	Freeze-dried powder
Molecular Mass	Predicted Molecular Mass: 29 kDa Accurate Molecular Mass: 38 kDa
Purity	> 97%

 Tel: 1-631-559-9269 1-516-512-3133

 Email: info@creative-biomart.com  Fax: 1-631-938-8127

 45-1 Ramsey Road, Shirley, NY 11967, USA

Applications	Positive Control; Immunogen; SDS-PAGE; WB.
Stability	The thermal stability is described by the loss rate. The loss rate was determined by accelerated thermal degradation test, that is, incubate the protein at 37 centigrade for 48h, and no obvious degradation and precipitation were observed. The loss rate is less than 5% within the expiration date under appropriate storage condition.
Storage	Avoid repeated freeze/thaw cycles. Store at 2-8 centigrade for one month. Aliquot and store at -80 centigrade for 12 months.
Storage Buffer	PBS, pH7.4, containing 0.01% SKL, 1 mM DTT, 5% Trehalose and Proclin300.
Reconstitution	Reconstitute in sterile water to a concentration of 0.1-1.0 mg/mL. Do not vortex.

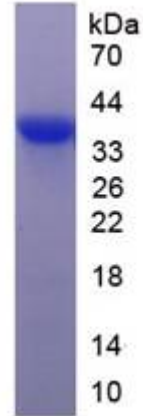
GENE INFORMATION

Gene Name	Calr calreticulin [<i>Rattus norvegicus</i> (Norway rat)]
Official Symbol	Calr
Synonyms	CALR; calreticulin; CABP3; CALBP; CRP55; ERp60; HACBP; calregulin; calcium-binding protein 3; endoplasmic reticulum resident protein 60
Gene ID	64202
mRNA Refseq	NM_022399
Protein Refseq	NP_071794
UniProt ID	P18418

 Tel: 1-631-559-9269 1-516-512-3133

 Email: info@creative-biomart.com  Fax: 1-631-938-8127

 45-1 Ramsey Road, Shirley, NY 11967, USA



 Tel: 1-631-559-9269 1-516-512-3133

 Email: info@creative-biomart.com  Fax: 1-631-938-8127

 45-1 Ramsey Road, Shirley, NY 11967, USA