

Recombinant Mouse Calr protein, His-tagged

Cat. No. Calr-5333M Lot. No. (See product label)

SPECIFICATION

Product Overview	Recombinant Mouse Calr protein(P14211)(18-416aa), fused with C-terminal His tag, was expressed in Yeast.
Species	Mouse
Source	Yeast
ProteinLength	18-416aa
Tag	C-His
Form	If the delivery form is liquid, the default storage buffer is Tris/PBS-based buffer, 5%-50% glycerol. If the delivery form is lyophilized powder, the buffer before lyophilization is Tris/PBS-based buffer, 6% Trehalose, pH 8.0.
Molecular Mass	48.3 kDa
Purity	Greater than 90% as determined by SDS-PAGE.
Storage	Store at -20°C/-80°C upon receipt, aliquoting is necessary for mutiple use. Avoid repeated freeze-thaw cycles.
Reconstitution	We recommend that this vial be briefly centrifuged prior to opening to bring the contents to the bottom. Please reconstitute protein in deionized sterile water to a concentration of 0.1-1.0 mg/mL. We recommend to add 5-50% of glycerol (final

 Tel: 1-631-559-9269 1-516-512-3133

 Email: info@creative-biomart.com  Fax: 1-631-938-8127

 45-1 Ramsey Road, Shirley, NY 11967, USA

concentration) and aliquot for long-term storage at -20°C/-80°C.

AA Sequence

DPAIYFKEQFLDGAWTNRWVESKHKSDFGKFVLSGKFYGDLEKDKGLQTSQDA
 RFYALSAKFEPFSNKGQTLVVQFTVKHEQNIDCGGGYVKLFPSGLDQKDMHGDSEY
 NIMFGPDICGPGTKKVHVIFNYKGNVLINKDIRCKDDEFTHLYTLIVRPDNTYEVKID
 NSQVESGSLEDDWDFLPPKKIKDPDAAKPEDWDERAKIDDPTDSKPEDWDKPEHIP
 DPDAKKPEDWDEEMDGEWEPPVIQNPEYKGEWKPRQIDNPDYKGTWIHPEIDNPE
 YSPDANIYAYDSFAVLGLDLWQVKSGTIFDNFLITNDEAYAEFFGNETWGWTKAAEK
 QMKDKQDEEQRLKEEEEEDKKRKEEEEAEDKEDDDDRDEDEDEEEDKEEEDDEEESP
 GQAKDEL

GENE INFORMATION

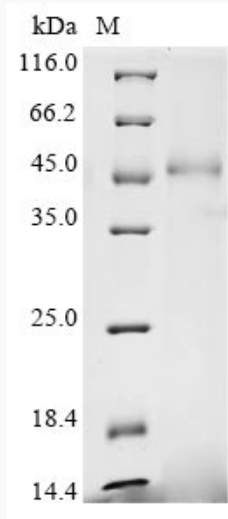
Gene Name	Calr calreticulin [<i>Mus musculus</i>]
Official Symbol	Calr
Synonyms	CALR; calreticulin; CRP55; ERp60; HACBP; endoplasmic reticulum resident protein 60; CRT; Calregulin;
Gene ID	12317
mRNA Refseq	NM_007591
Protein Refseq	NP_031617

 Tel: 1-631-559-9269 1-516-512-3133

 Email: info@creative-biomart.com  Fax: 1-631-938-8127

 45-1 Ramsey Road, Shirley, NY 11967, USA

SDS-PAGE



 Tel: 1-631-559-9269 1-516-512-3133

 Email: info@creative-biomart.com  Fax: 1-631-938-8127

 45-1 Ramsey Road, Shirley, NY 11967, USA