

Recombinant Mouse Camp Protein, His-tagged

Cat. No. Camp-360M Lot. No. (See product label)

SPECIFICATION

Product Overview	Recombinant Mouse Camp Protein (Gln28-Glu172) with N-His tag was expressed in 293F.
Species	Mouse
Source	HEK293
ProteinLength	Gln28-Glu172
Description	This gene encodes a member of the cathelicidin family of antimicrobial peptides that play an important role in the defense against microbial infection. The encoded preproprotein undergoes proteolytic processing to generate a mature polypeptide before secretion by host cells such as neutrophils, epithelial cells and macrophages. Mice lacking the encoded protein exhibit increased susceptibility to group A streptococcus and Escherichia coli infections.
Form	Freeze-dried powder
Molecular Mass	Predicted Molecular Mass: 17.8 kDa Accurate Molecular Mass: 16 kDa
Purity	> 95%
Applications	Positive Control; Immunogen; SDS-PAGE; WB.

 Tel: 1-631-559-9269 1-516-512-3133

 Email: info@creative-biomart.com  Fax: 1-631-938-8127

 45-1 Ramsey Road, Shirley, NY 11967, USA

Stability	The thermal stability is described by the loss rate. The loss rate was determined by accelerated thermal degradation test, that is, incubate the protein at 37 centigrade for 48h, and no obvious degradation and precipitation were observed. The loss rate is less than 5% within the expiration date under appropriate storage condition.
Storage	Avoid repeated freeze/thaw cycles. Store at 2-8 centigrade for one month. Aliquot and store at -80 centigrade for 12 months.
Storage Buffer	20mM Tris, 150mM NaCl, pH8.0, containing 1mM EDTA, 1mM DTT, 0.01% SKL, 5% Trehalose and Proclin300.
Reconstitution	Reconstitute in sterile water to a concentration of 0.1-1.0 mg/mL. Do not vortex.

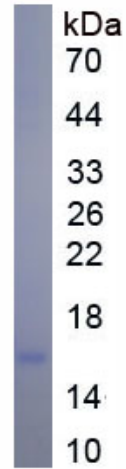
GENE INFORMATION

Gene Name	Camp cathelicidin antimicrobial peptide [<i>Mus musculus</i> (house mouse)]
Official Symbol	Camp
Synonyms	CAMP; cathelicidin antimicrobial peptide; cathelin-related antimicrobial peptide; CLP; cathelin-like protein; Cnlp; MCLP; CAP18; Cramp; FALL39
Gene ID	12796
mRNA Refseq	NM_009921
Protein Refseq	NP_034051
UniProt ID	P51437

 Tel: 1-631-559-9269 1-516-512-3133

 Email: info@creative-biomart.com  Fax: 1-631-938-8127

 45-1 Ramsey Road, Shirley, NY 11967, USA



Tel: 1-631-559-9269 1-516-512-3133

Email: info@creative-biomart.com Fax: 1-631-938-8127

45-1 Ramsey Road, Shirley, NY 11967, USA