

Recombinant Mouse Camp protein, His-SUMO-tagged

Cat. No. Camp-4619M Lot. No. (See product label)

SPECIFICATION

Product Overview	Recombinant Mouse Camp protein(P51437)(135-172 aa), fused with N-terminal His and SUMO tag, was expressed in E.coli.
Species	Mouse
Source	E.coli
ProteinLength	135-172 aa
Form	For liquid formulations, the standard storage buffer consists of a Tris or PBS based solution supplemented with 5-50% glycerol. When provided as lyophilized powder, the product undergoes freeze-drying from a Tris- or PBS-based formulation containing 6% trehalose, adjusted to pH 8.0 prior to the lyophilization process.
Molecular Mass	17.2 kDa
AASequence	ISRLAGLLRKGGEKIGEKLLKIGQKIKNFFQKLVPQPE
Purity	Greater than 85% as determined by SDS-PAGE.
Storage	Store at -20°C/-80°C upon receipt, aliquoting is necessary for mutiple use. Avoid repeated freeze-thaw cycles.
Reconstitution	Please reconstitute protein indeionized sterile water to a concentration of 0.1-1.0 mg/mL. Aliquot for long-term storage at -80°C.

 Tel: 1-631-559-9269 1-516-512-3133

 Email: info@creative-biomart.com  Fax: 1-631-938-8127

 45-1 Ramsey Road, Shirley, NY 11967, USA

GENE INFORMATION

Gene Name Camp cathelicidin antimicrobial peptide [*Mus musculus*]

Official Symbol [Camp](#)

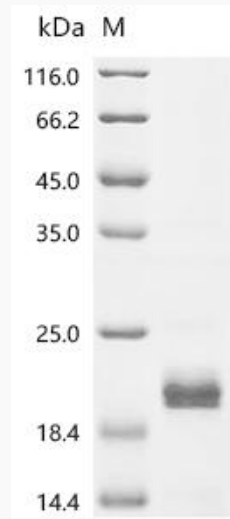
Synonyms CAMP; cathelicidin antimicrobial peptide; cathelin-related antimicrobial peptide; CLP; cathelin-like protein; Cnlp; MCLP; CAP18; Cramp; FALL39;

Gene ID [12796](#)

mRNA Refseq [NM_009921](#)

Protein Refseq [NP_034051](#)

SDS-PAGE



 Tel: 1-631-559-9269 1-516-512-3133

 Email: info@creative-biomart.com  Fax: 1-631-938-8127

 45-1 Ramsey Road, Shirley, NY 11967, USA