

Recombinant Mouse Camp Protein, His/GST-tagged

Cat. No. Camp-661M Lot. No. (See product label)

SPECIFICATION

Product Overview	Recombinant Mouse Camp(Ser31~Gln173) fused with His/GST tag at N-terminal was expressed in E. coli.
Species	Mouse
Source	E.coli
ProteinLength	Ser31~Gln173
Description	This gene encodes a member of the cathelicidin family of antimicrobial peptides that play an important role in the defense against microbial infection. The encoded preproprotein undergoes proteolytic processing to generate a mature polypeptide before secretion by host cells such as neutrophils, epithelial cells and macrophages. Mice lacking the encoded protein exhibit increased susceptibility to group A streptococcus and Escherichia coli infections.
Form	PBS, pH7.4, containing 0.01% SKL, 1mM DTT, 5% Trehalose and Proclin300.
Molecular Mass	43.1kDa
Endotoxin	<1.0EU per 1ug (determined by the LAL method)
Purity	> 95%
Applications	Positive Control; Immunogen; SDS-PAGE; WB.

 Tel: 1-631-559-9269 1-516-512-3133

 Email: info@creative-biomart.com  Fax: 1-631-938-8127

 45-1 Ramsey Road, Shirley, NY 11967, USA

If bio-activity of the protein is needed, please check active protein

Stability

The thermal stability is described by the loss rate. The loss rate was determined by accelerated thermal degradation test, that is, incubate the protein at 37 centigrade for 48h, and no obvious degradation and precipitation were observed. The loss rate is less than 5% within the expiration date under appropriate storage condition.

Storage

Avoid repeated freeze/thaw cycles. Store at 2-8 centigrade for one month. Aliquot and store at -80 centigrade for 12 months.

Reconstitution

Reconstitute in PBS or others

GENE INFORMATION

Gene Name

[Camp cathelicidin antimicrobial peptide \[Mus musculus \]](#)

Official Symbol

[Camp](#)

Synonyms

CAMP; cathelicidin antimicrobial peptide; cathelin-related antimicrobial peptide; CLP; cathelin-like protein; Cnlp; MCLP; CAP18; Cramp; FALL39;

Gene ID

[12796](#)

mRNA Refseq

[NM_009921](#)

Protein Refseq

[NP_034051](#)

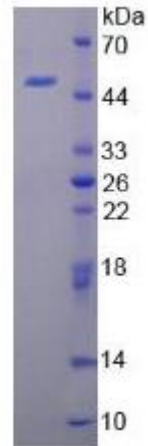
UniProt ID

[P51437](#)

 Tel: 1-631-559-9269 1-516-512-3133

 Email: info@creative-biomart.com  Fax: 1-631-938-8127

 45-1 Ramsey Road, Shirley, NY 11967, USA



Tel: 1-631-559-9269 1-516-512-3133

Email: info@creative-biomart.com Fax: 1-631-938-8127

45-1 Ramsey Road, Shirley, NY 11967, USA