

# Active Recombinant Full Length Rat Calpain 2 Protein, His-tagged

**Cat. No.** Capn2-2632R    **Lot. No.** (See product label)

## SPECIFICATION

<b>Product Overview</b>	Active Recombinant Full Length Rat Calpain 2 Protein with His tag was expressed in E. coli.
<b>Species</b>	Rat
<b>Source</b>	E.coli
<b>ProteinLength</b>	1-700aa
<b>Description</b>	Enables calcium ion binding activity; cytoskeletal protein binding activity; and enzyme binding activity. Contributes to calcium-dependent cysteine-type endopeptidase activity. Involved in several processes, including cellular response to interferon-beta; positive regulation of cell death; and positive regulation of myoblast fusion. Located in several cellular components, including external side of plasma membrane; focal adhesion; and neuronal cell body. Colocalizes with mitochondrial intermembrane space. Biomarker of hypertrophic cardiomyopathy and sciatic neuropathy. Orthologous to human CAPN2 (calpain 2).
<b>Tag</b>	His
<b>Bio-activity</b>	1.47 U/mg protein. One unit is defined as the amount of enzyme that cleaves 1pmol of the caspase substrate N-succinyl-Leu-Tyr-7-amido-4-methylcoumarin per 15 min at 37 centigrade.

 Tel: 1-631-559-9269    1-516-512-3133

 Email: [info@creative-biomart.com](mailto:info@creative-biomart.com)     Fax: 1-631-938-8127

 45-1 Ramsey Road, Shirley, NY 11967, USA

**AA Sequence**

MAGIAMKLAKDREAAEGLGSHERAICYLNQDYETLRNECLEAGALFQDPSFPALPSS  
 LGFKELGPYSSKTRGIEWKRPTEICADPQFIIGGATRTDICQGALGDCWLLAAIASLTL  
 NEEILARVVPLDQSFQENYAGIFHFQFWQYGEWVEVVDDRLPTKDGELLFVHSAE  
 GSEFWSALLEKAYAKINGCYEALSGGATTEGFEDFTGGIAEWYELRKPPPNLFKIIQK  
 ALEKGSLLGCSIDITSAADSEAVTYQKLVKGHAYSVTGAEVESSGSLQKLIRIRNPW  
 GQVEWTGKWNDNCPWNTVDPEVRANLTERQEDGEFWMFSDFLRHYSRLEICN  
 LTPDTLTCDSYKKWKLTKMDGNWRRGSTAGGCRNYPNTFWMNPQYLIKLEEEDED  
 DEDGERGCTFLVGLIQKHRRRQRKMGEDMHTIGFGIYEVPEELTGQTNIHLSKNFFL  
 TTRARERSDTFINLREVLNRFKLPPGEYVLPSTFEPHKNNGDFCIRVFSEKKADYQTV  
 DDEIEANIEEIEANEEDIGDGFRLFAQLAGEDAEISAFELQILRRVLAKREDIKSDGF  
 SIETCKIMVDMLDEDGSGKLGKLFYILWTKIQKYQKIYREIDVDRSGTMNSYEMRKA  
 LEEAGFKLPCQLHQVIVARFADDELIIDFNFRCLVRLEILFKIFKQLDPENTGTIQLD  
 LISWLSFVSLHHHHHHMHHHHHHHYSNIEANESEEEERQFRKLFVQLAGDDMEVSAT  
 ELMNILNKVVTRHPDLKTDGFGIDTCRSMVAVMDSDTTGKLGFEFEFKYLWNNIKKW  
 QGIYKRFDTDRSGTIGSNELPGAFAAGFHLNQHIYSMIIRRYSDETGNMDFDNFISC  
 LVRLDAMFRAFRLSLDKNGTGQIQVNIQEWLQLTMYS

**Purity** >90% by SDS-PAGE

**Storage** Store it under sterile conditions at -20 to -80 centigrade. It is recommended that the protein be aliquoted for optimal storage. Avoid repeated freeze-thaw cycles.

**Concentration** 1.2 mg/mL by Bradford

**Storage Buffer** Sterile 50mM Tris, pH7.8, 100mM NaCl, 5mM EDTA, 5mM β-mercaptoethanol, 40% Glycerol

## GENE INFORMATION

**Gene Name** [Capn2 calpain 2 \[ Rattus norvegicus \(Norway rat\) \]](#)

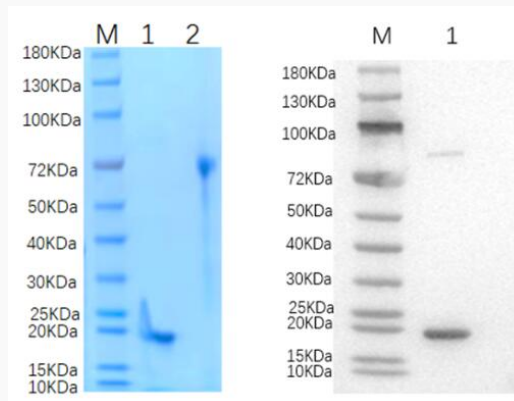
 Tel: 1-631-559-9269 1-516-512-3133

 Email: [info@creative-biomart.com](mailto:info@creative-biomart.com)  Fax: 1-631-938-8127


 45-1 Ramsey Road, Shirley, NY 11967, USA

<b>Official Symbol</b>	Capn2
<b>Synonyms</b>	Active Recombinant Full Length Rat Calpain 2 Protein, His-tagged; Capn2, His-tagged(Rat); Capn2-2632R; Capn2; calpain 2; calpain-2 catalytic subunit; CANP 2; M-calpain; calcium-activated neutral proteinase 2; calpain 2, (m/II) large subunit; calpain II; calpain M-type; calpain-2 large subunit; millimolar-calpain; EC 3.4.22.53
<b>Gene ID</b>	29154
<b>mRNA Refseq</b>	NM_017116
<b>Protein Refseq</b>	NP_058812
<b>UniProt ID</b>	Q07009

**Reducing 12% SDS-PAGE (CBB stained) and WB (Anti-His Mouse Monoclonal Antibody) analysis profiles of purified Capn2.**



1. Capn2
2. BSA

 Tel: 1-631-559-9269 1-516-512-3133

 Email: [info@creative-biomart.com](mailto:info@creative-biomart.com)  Fax: 1-631-938-8127

 45-1 Ramsey Road, Shirley, NY 11967, USA