

Recombinant Mouse Car14 Protein (Ala16-Met290), N-His tagged

Cat. No. Car14-6725M **Lot. No.** (See product label)

SPECIFICATION

Product Overview	Recombinant mouse Ca14 (Ala16-Met290) fused with the N-terminal His tag was expressed in E. coli.
Species	Mouse
Source	E.coli
ProteinLength	Ala16-Met290
Description	Enables carbonate dehydratase activity. Predicted to be involved in one-carbon metabolic process. Predicted to act upstream of or within carbon dioxide transport and regulation of pH. Predicted to be located in membrane. Predicted to be integral component of membrane. Predicted to be active in plasma membrane. Is expressed in several structures, including central nervous system; cranium; epiblast; eye; and urinary system. Orthologous to human CA14 (carbonic anhydrase 14).
Form	Lyophilized powder/frozen liquid
Molecular Mass	30.25 kDa
Purity	> 90 % as determined by SDS-PAGE
Notes	For research use only.

 Tel: 1-631-559-9269 1-516-512-3133

 Email: info@creative-biomart.com  Fax: 1-631-938-8127

 45-1 Ramsey Road, Shirley, NY 11967, USA

Storage	Use a manual defrost freezer and avoid repeated freeze thaw cycles. Store at 2 to 8 centigrade for one week. Store at -20 to -80 centigrade for twelve months from the date of receipt.
Storage Buffer	Supplied as solution form in PBS or lyophilized from PBS.
Reconstitution	Reconstitute in sterile water for a stock solution.
Shipping	They are shipped out with dry ice/blue ice unless customers require otherwise.

GENE INFORMATION

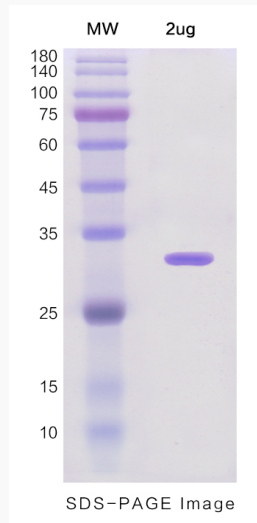
Gene Name	Car14 carbonic anhydrase 14 [Mus musculus (house mouse)]
Official Symbol	Car14
Synonyms	Car14; carbonic anhydrase 14; Ca14; CA-XIV; carbonic anhydrase 14; CA XIV; carbonate dehydratase XIV; carbonic anhydrase XIV; EC 4.2.1.1
Gene ID	23831
mRNA Refseq	NM_011797
Protein Refseq	NP_035927
UniProt ID	Q9WVT6

 Tel: 1-631-559-9269 1-516-512-3133

 Email: info@creative-biomart.com  Fax: 1-631-938-8127

 45-1 Ramsey Road, Shirley, NY 11967, USA

SDS-PAGE



 Tel: 1-631-559-9269 1-516-512-3133

 Email: info@creative-biomart.com  Fax: 1-631-938-8127

 45-1 Ramsey Road, Shirley, NY 11967, USA