

Recombinant *S. pyogenes* Cas9 (D10A, H840A) Protein, His-tagged

Cat. No. Cas9-04S **Lot. No.** (See product label)

SPECIFICATION

Product Overview	Recombinant full length SpCas9 (D10A, H840A)-NLS from <i>S. pyogenes</i> was expressed in <i>E. coli</i> using a C-terminal His tag.
Species	<i>S.pyogenes</i>
Source	<i>E.coli</i>
Description	Cas9 is a multidomain nuclease from the bacterium <i>S. pyogenes</i> characteristic of type II CRISPR- Cas systems. Using single guide RNA (sgRNA), Cas9 is targeted to specific genomic loci where it generates a blunt ended double strand break. SpCas9 (D10A, H840A)-NLS is a catalytic mutant of Cas9 containing a nuclear localization sequence for optimal activity. Unlike wild type Cas9, SpCas9 (D10A, H840A)-NLS generates staggered double strand DNA breaks with overhangs. SpCas9 (D10A, H840A) can be used for various genome editing applications.
Molecular Mass	Observed MW: ~160 kDa Calculated MW: ~161 kDa
Purity	>80%
Stability	One year at -70 centigrade from date of shipment.
Storage	Store product at -70 centigrade. For optimal storage, aliquot target into smaller quantities after centrifugation and store at recommended temperature. For most

 Tel: 1-631-559-9269 1-516-512-3133

 Email: info@creative-biomart.com  Fax: 1-631-938-8127

 45-1 Ramsey Road, Shirley, NY 11967, USA

favorable performance, avoid repeated handling and multiple freeze/thaw cycles. Always include RNase inhibitor at manufacturer recommended concentrations in Cas enzyme reactions.

Concentration
0.2 µg/µL
6.26 pmol/µg

Storage Buffer
Recombinant protein stored in 50mM sodium phosphate, pH 7.5, 300mM NaCl, 200mM imidazole, 1mM DTT, 10% glycerol.

Shipping
On dry ice.

Full Length
Full L.

GENE INFORMATION

Official Symbol
Cas9

Synonyms
Cas9; Csn1; Spy_1046; Cas9 (D10A, H840A)-Nikase

Protein Refseq
[AAK33936](#)

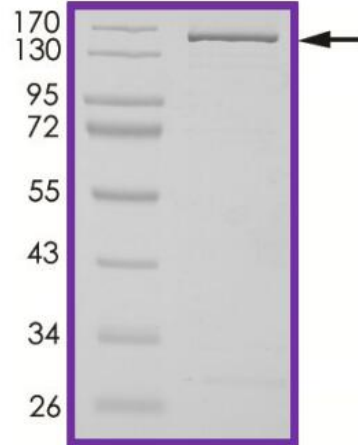
UniProt ID
[Q99ZW2](#)

 Tel: 1-631-559-9269 1-516-512-3133

 Email: info@creative-biomart.com  Fax: 1-631-938-8127

 45-1 Ramsey Road, Shirley, NY 11967, USA

Purity



 Tel: 1-631-559-9269 1-516-512-3133

 Email: info@creative-biomart.com  Fax: 1-631-938-8127

 45-1 Ramsey Road, Shirley, NY 11967, USA