

## Recombinant *S. pyogenes* Cas9 Protein, His-tagged

Cat. No. Cas9-06S Lot. No. (See product label)

### SPECIFICATION

<b>Product Overview</b>	Recombinant full length Cas9-NLS from <i>S. pyogenes</i> was expressed in <i>E. coli</i> using a C-terminal His tag. Cas9-NLS contains a nuclear localization sequence for optimal activity.
<b>Species</b>	<i>S.pyogenes</i>
<b>Source</b>	<i>E.coli</i>
<b>Description</b>	In bacteria and archaea CRISPR- Cas systems provide sequence based adaptive immunity against mobile genetic elements such as phages and plasmids. Cas9 is a multidomain nuclease from the bacterium <i>S. pyogenes</i> characteristic of type II CRISPR- Cas systems. Using single guide RNA (sgRNA), Cas9 is targeted to specific genomic loci where it generates a blunt ended double strand break. Cas9 can be used for genetic engineering experiments such as genome editing and generating transgenic models.
<b>Molecular Mass</b>	Observed MW: ~160 kDa Calculated MW: ~161 kDa
<b>Purity</b>	>70%
<b>Stability</b>	One year at -70 centigrade from date of shipment.
<b>Storage</b>	Store product at -70 centigrade. For optimal storage, aliquot target into smaller quantities after centrifugation and store at recommended temperature. For most

 Tel: 1-631-559-9269 1-516-512-3133

 Email: [info@creative-biomart.com](mailto:info@creative-biomart.com)  Fax: 1-631-938-8127

 45-1 Ramsey Road, Shirley, NY 11967, USA

favorable performance, avoid repeated handling and multiple freeze/thaw cycles. Always include RNase inhibitor at manufacturer recommended concentrations in Cas enzyme reactions.

**Concentration**  
0.1 µg/µL  
6.26 pmol/µg

**Storage Buffer**  
Recombinant protein stored in 50mM sodium phosphate, pH 7.5, 300mM NaCl, 150mM imidazole, 1mM DTT, 10% glycerol.

**Shipping**  
On dry ice.

**Full Length**  
Full L.

## GENE INFORMATION

**Official Symbol**  
Cas9

**Synonyms**  
Csn1; Csx12; Spy\_1046; SpyCas9

**Protein Refseq**  
[AAK33936](#)

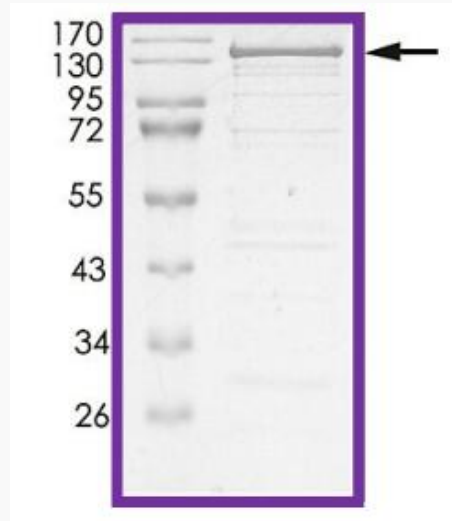
**UniProt ID**  
[Q99ZW2](#)

 Tel: 1-631-559-9269 1-516-512-3133

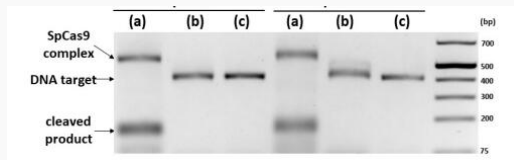
 Email: [info@creative-biomart.com](mailto:info@creative-biomart.com)  Fax: 1-631-938-8127

 45-1 Ramsey Road, Shirley, NY 11967, USA

**Purity**



**Activity**



 Tel: 1-631-559-9269 1-516-512-3133

 Email: [info@creative-biomart.com](mailto:info@creative-biomart.com)  Fax: 1-631-938-8127

 45-1 Ramsey Road, Shirley, NY 11967, USA