

## Recombinant Mouse Caspase 3

Cat. No. Casp3-1641M Lot. No. (See product label)

### SPECIFICATION

<b>Product Overview</b>	Recombinant Procaspase-3 (1083P-5) is produced by expression of a human cDNA in E. coli.
<b>Species</b>	Mouse
<b>Source</b>	E.coli
<b>Description</b>	CASP3 (also know as CPP32, Yama and apopain) is a member of the caspase family of cysteine proteases. CASP3 exists in cells as an inactive 32 kDa proenzyme. Proteolytic processing of this inactive proenzyme generates the 17 kD and 12 kD subunits which, when assembled as a tetramer (a pair of heterodimers), form the active caspase. Cascades of caspase activation have been shown to be key signal-transducing events in apoptosis.
<b>Molecular Weight</b>	32.0 kDa
<b>Form</b>	Lyophilized powder.
<b>Appearance</b>	Lyophilized powder
<b>Reconstitution</b>	Reconstitute to 0.1 g/μin PBS containing 15% glycerol.
<b>Purity</b>	≥ 90 % by SDS-PAGE
<b>Storage</b>	Store at -70°C. After initial reconstitution, aliquot product into individual tubes and

 Tel: 1-631-559-9269 1-516-512-3133

 Email: [info@creative-biomart.com](mailto:info@creative-biomart.com)  Fax: 1-631-938-8127

 45-1 Ramsey Road, Shirley, NY 11967, USA

immediately refreeze at -70°C. AVOID FREEZE/THAW CYCLES.

### Pathways

Activation of DNA fragmentation factor; Apoptosis; Amoebiasis; Alzheimer"s disease; Alpha6-Beta4 Integrin Signaling Pathway; Androgen Receptor Signaling Pathway; Apoptosis Modulation by HSP70; Apoptosis induced DNA fragmentation; Apoptotic cleavage of cellular proteins; Caspase cascade in apoptosis; Cell death signalling via NRAGE; Colorectal cancer; Epithelial cell signaling in Helicobacter pylori infection; Herpes simplex infection; Huntington"s disease

## GENE INFORMATION

**Gene Name** [Casp3 caspase 3 \[ Mus musculus \]](#)

**Official Symbol** [Casp3](#)

### Synonyms

Casp3; caspase 3; CC3; AC-3; Lice; Yama; mldy; CPP32; Apopain; Caspase-3; A830040C14Rik; caspase-3; SCA-1; CASP-3; CPP-32; protein Yama; cysteine protease CPP32; SREBP cleavage activity 1; caspase 3, apoptosis related cysteine protease; Caspase-3; Cysteine protease CPP32; LICE; Protein Yama; EC 3.4.22.56

**Gene ID** [12367](#)

**mRNA Refseq** [NM\\_009810](#)

**Protein Refseq** [NP\\_033940](#)

**UniProt ID** [P70677](#)

**Chromosome Location** [8 B1.1; 8 26.0 cM](#)

 Tel: 1-631-559-9269 1-516-512-3133

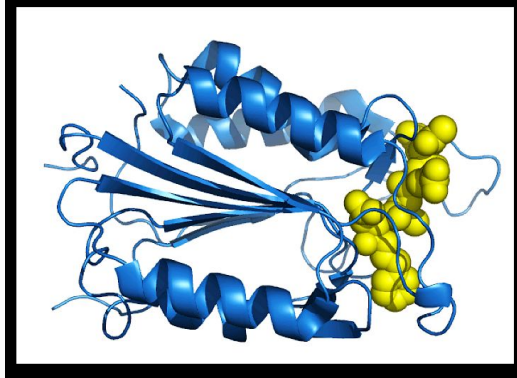
 Email: [info@creative-biomart.com](mailto:info@creative-biomart.com)  Fax: 1-631-938-8127

 45-1 Ramsey Road, Shirley, NY 11967, USA

**Function**

aspartic-type endopeptidase activity; cyclin-dependent protein kinase inhibitor activity; cysteine-type endopeptidase activity; cysteine-type peptidase activity; hydrolase activity; peptidase activity; phospholipase A2 activator activity; protein binding

**Caspase31rhk.**



 Tel: 1-631-559-9269 1-516-512-3133

 Email: [info@creative-biomart.com](mailto:info@creative-biomart.com)  Fax: 1-631-938-8127

 45-1 Ramsey Road, Shirley, NY 11967, USA