

Recombinant Rat Casp3 protein, His & T7-tagged

Cat. No. Casp3-624R Lot. No. (See product label)

SPECIFICATION

Product Overview	Recombinant Rat Casp3 aa. (Ser29~Asp175 (Accession # P55213)) fused with N-terminal His & T7 tag was produced in E. coli cells.
Species	Rat
Source	E.coli
ProteinLength	Ser29~Asp175
Description	Apoptotic cysteine-aspartic acid protease that may play a role in neuronal cell death regulation and other apoptotic processes.
Form	Freeze-dried powder
Molecular Mass	Predicted Molecular Mass: 20.3kDa
Endotoxin	<1.0EU per 1g (determined by the LAL method)
Purity	>95%
Characteristic	The isoelectric point is 6.5.
Applications	SDS-PAGE; WB; ELISA; IP
Stability	The thermal stability is described by the loss rate. The loss rate was determined by

 Tel: 1-631-559-9269 1-516-512-3133

 Email: info@creative-biomart.com  Fax: 1-631-938-8127

 45-1 Ramsey Road, Shirley, NY 11967, USA

accelerated thermal degradation test, that is, incubate the protein at 37°C for 48h, and no obvious degradation and precipitation were observed. The loss rate is less than 5% within the expiration date under appropriate storage condition.

Storage

Avoid repeated freeze/thaw cycles. Store at 2-8°C for one month. Aliquot and store at -80°C for 12 months.

Storage buffer

Supplied as lyophilized form in PBS, pH7.4, containing 5% sucrose, 0.01% sarcosyl.

Reconstitution

Reconstitute in sterile PBS, pH7.2-pH7.4.

GENE INFORMATION

Gene Name

Casp3 caspase 3 [*Rattus norvegicus* (Norway rat)]

Official Symbol

Casp3

Synonyms

Casp3; caspase 3; Lice; Yama; CPP32-beta; caspase-3; CASP-3; CPP-32; CPP32beta; Caspase 3, apoptosis related cysteine protease (ICE-like cysteine protease); IRP; SCA-1; SREBP cleavage activity 1; apopain; cysteine protease CPP32; cysteine protease p32-beta; protein Yama; yama protein

Gene ID

25402

mRNA Refseq

NM_012922.2

Protein Refseq

NP_037054.1

UniProt ID

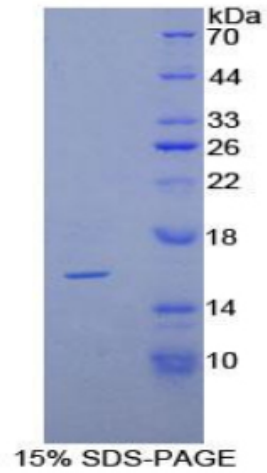
P55213

 Tel: 1-631-559-9269 1-516-512-3133

 Email: info@creative-biomart.com  Fax: 1-631-938-8127

 45-1 Ramsey Road, Shirley, NY 11967, USA

SDS-PAGE



 Tel: 1-631-559-9269 1-516-512-3133

 Email: info@creative-biomart.com  Fax: 1-631-938-8127

 45-1 Ramsey Road, Shirley, NY 11967, USA